

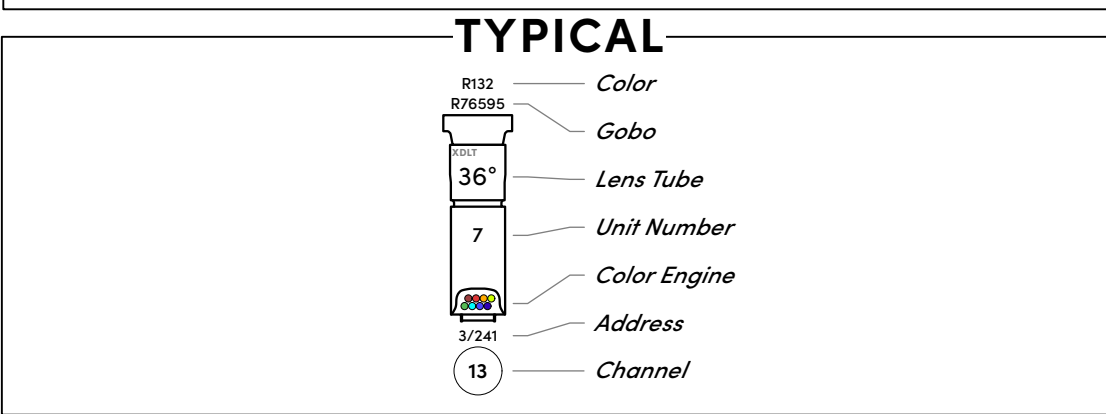
INSTRUMENTATION KEY

	ETC Source 4 19deg	5
	ETC Source 4 26deg	5
	ETC Source 4 LED2LS 19deg	3
	ETC Source 4 S3 XDLT 19deg	38
	ETC Source 4 S3 XDLT 26deg	44
	ETC Source 4 S3 XDLT 36deg	27
	ETC Source 4 S3 XDLT 50deg	4
	ETC Source 4 S3 XDLT 70deg	1
	ETC Desire Fresnel USD	19
	ETC D40 Lustr SELL40	10
	ETC ColorSource CYC	18
	ETC ColorSource Linear 1	4
	ETC High End Lonestar	14

OPTICS SUMMARY

COLOR	Index	Size	Count	TEMPLATE	Count
G872	1	6.25"	10	R77259	1
				R78417	9
				R78418	10

FROST	Index	Size	Count
R119	1		1
R119	1	6.25"	114
R132	4	6.25"	4



- NOTES**
- Have R119 On Hand For All Instruments At Hang
 - Have Barn Doors For Pars Available At Focus
 - Pencil Notes Take Priority Over Printed Notes

Will Loconto
LIGHTING DESIGNER
512.239.9311 / wloconto@ttu.edu



PRODUCTION TEAM

Dr. Bill Gelber DIRECTOR	Kaylie Jones STAGE MANAGER
Jared Roberts SCENIC DESIGNER	Josh Whitt PRODUCTION MANAGER
Meagan Woodard COSTUME DESIGNER	Natalie Mayo FACILITIES MANAGER
Oliver Loll SOUND DESIGNER	
Kyle Rainey TECHNICAL DIRECTOR	
John Conner PRODUCTION ELECTRICIAN	

This drawing represents visual concepts and construction suggestions only. The designer is not qualified to determine the structural appropriateness of this design and will not assume responsibility for improper engineering, construction, or usage. All materials, finishes, and construction must comply with the most stringent fire and safety codes as applicable.

SUBMITTALS

1	9/22/23	Initial Hang Plot
2	10/16/23	Focus Package

TEXAS TECH UNIVERSITY
CHARLES E. MAEDGEN JR. THEATRE

1/2" = 1' - 0"
SCALE EXCEPT WHERE NOTED
DATE 10/16/23
REVISION 10/16/23
DRAWN BY WDL

PLATE
LD 01
of 5

OVERHEAD HANG PLOT

LINESET: 4 TRIM: 23'-0"

1ST ELECTRIC LINESET: 4 TRIM: 23'-0"

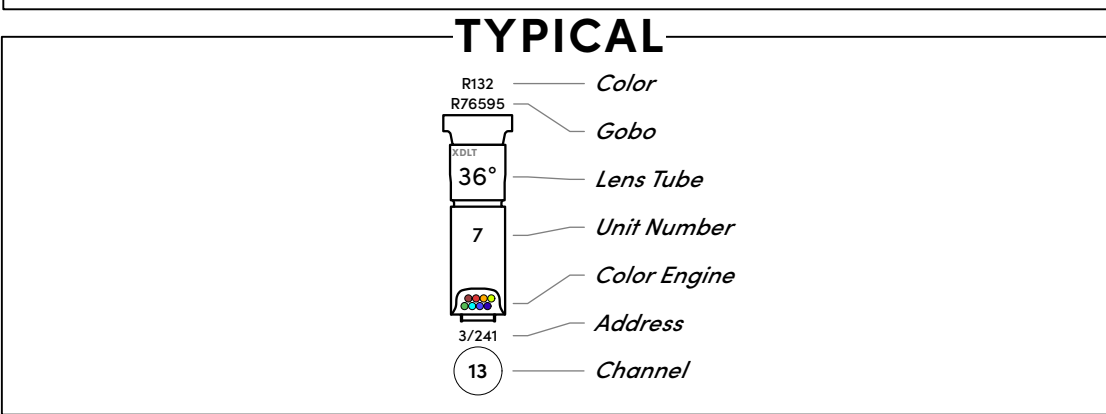
INSTRUMENTATION KEY

	ETC Source 4 19deg	5
	ETC Source 4 26deg	5
	ETC Source4 LED2LS 19deg	3
	ETC Source 4 S3 XDLT 19deg	38
	ETC Source 4 S3 XDLT 26deg	44
	ETC Source 4 S3 XDLT 36deg	27
	ETC Source 4 S3 XDLT 50deg	4
	ETC Source 4 S3 XDLT 70deg	1
	ETC Desire Fresnel USD	19
	ETC D40 Lustr SELL40	10
	ETC ColorSource CYC	18
	ETC ColorSource Linear 1	4
	ETC High End Lonestar	14

OPTICS SUMMARY

COLOR	Index	Size	Count	TEMPLATE	Index	Count
G872		6.25"	10	R77259	1	1
				R78417	9	9
				R78418	10	10

FROST	Index	Size	Count
R119			1
R119		6.25"	114
R132		6.25"	4



- NOTES**
- Have R119 On Hand For All Instruments At Hang
 - Have Barn Doors For Pars Available At Focus
 - Pencil Notes Take Priority Over Printed Notes

Will Loconto
LIGHTING DESIGNER
512.239.9311 / wloconto@ttu.edu

THE THREEPENNY OPERA

PRODUCTION TEAM

Dr. Bill Gelber DIRECTOR	Kaylie Jones STAGE MANAGER
Jared Roberts SCENIC DESIGNER	Josh Whitt PRODUCTION MANAGER
Meagan Woodard COSTUME DESIGNER	Natalie Mayo FACILITIES MANAGER
Oliver Loll SOUND DESIGNER	
Kyle Rainey TECHNICAL DIRECTOR	
John Conner PRODUCTION ELECTRICIAN	

This drawing represents visual concepts and construction suggestions only. The designer is not qualified to determine the structural appropriateness of this design and will not assume responsibility for improper engineering, construction, or usage. All materials, finishes, and construction must comply with the most stringent fire and safety codes as applicable.

SUBMITTALS

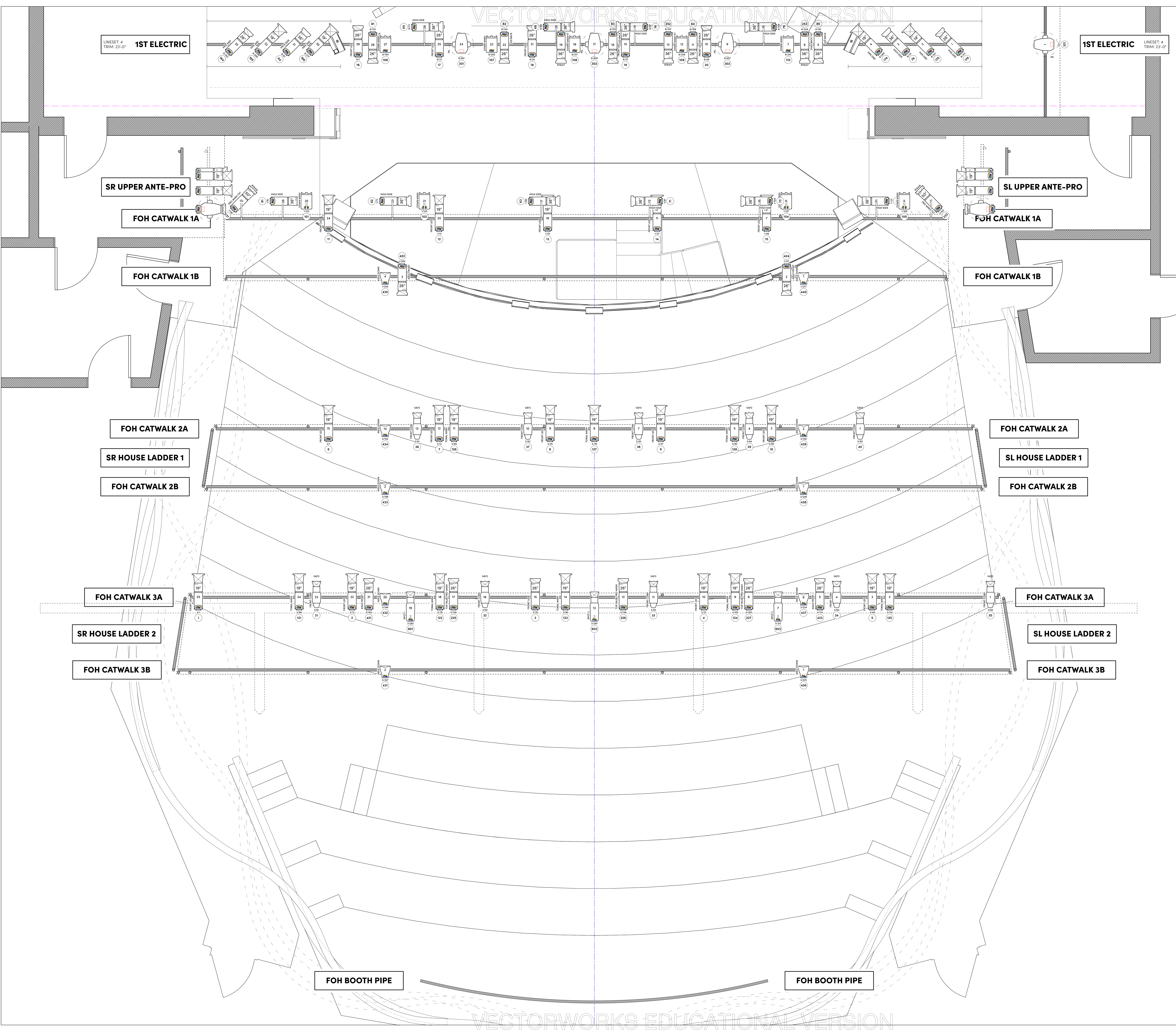
1	9/22/23	Initial Hang Plot
2	10/16/23	Focus Package

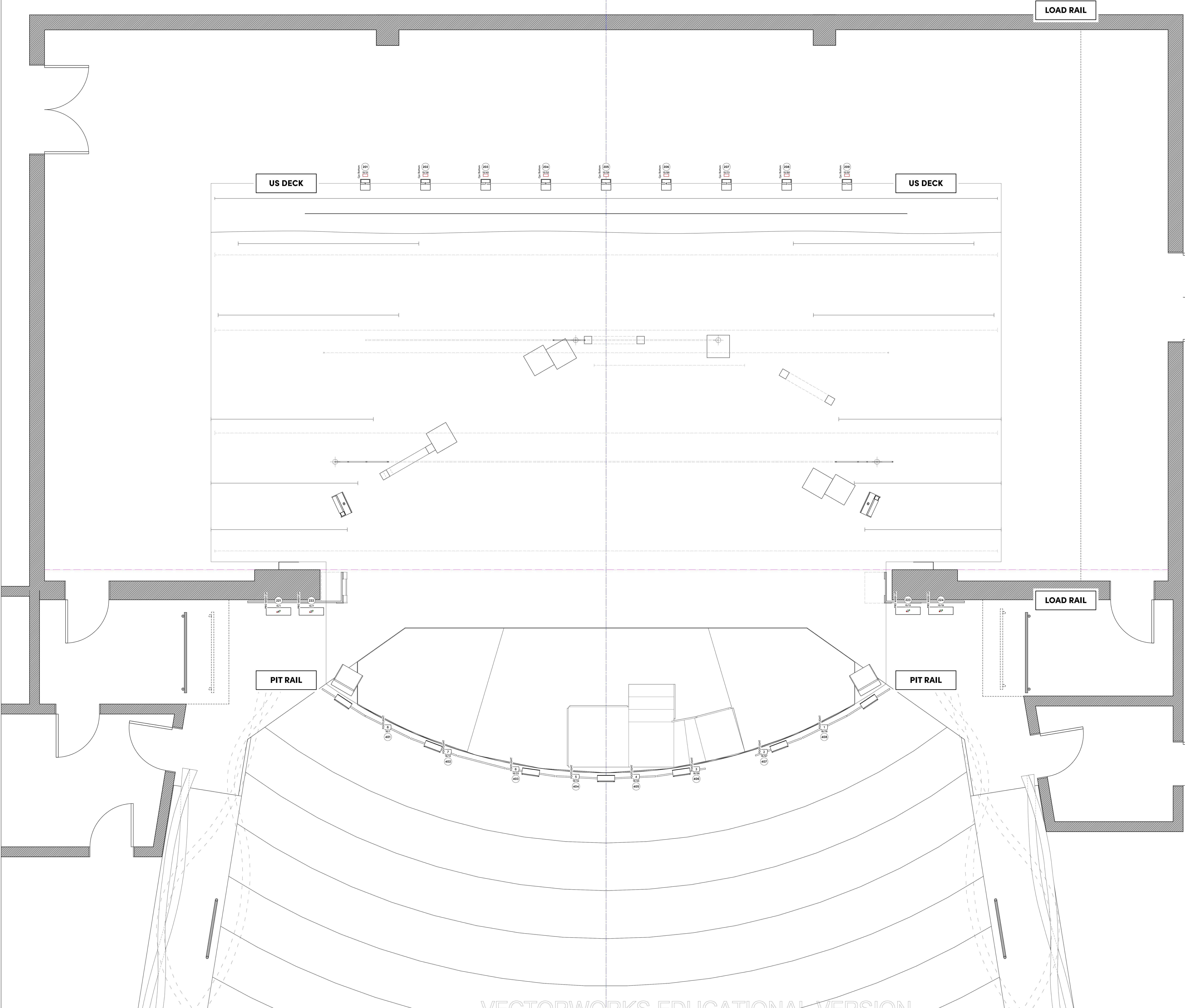
TEXAS TECH UNIVERSITY
CHARLES E. MAEDGEN JR. THEATRE

1/2" = 1' - 0"
SCALE EXCEPT WHERE NOTED
DATE 10/16/23
REVISION 10/16/23
DRAWN BY WDL

PLATE
LD 02
of 5

FOH OVERHEAD HANG PLOT





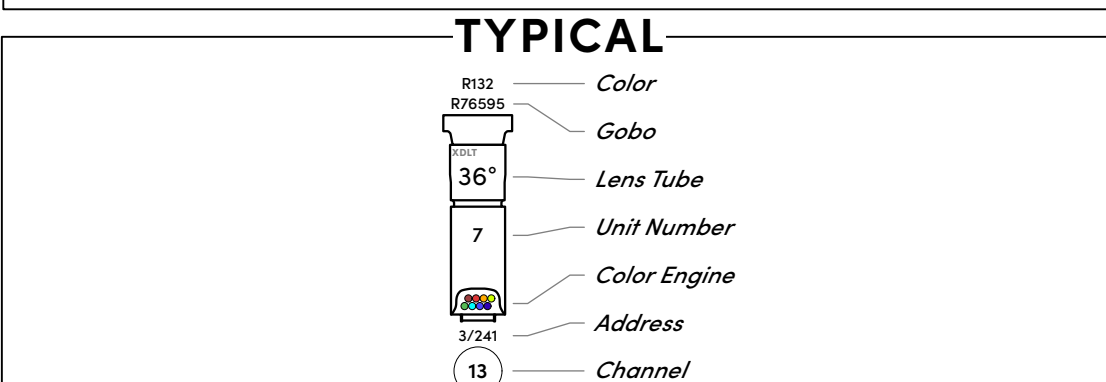
INSTRUMENTATION KEY

	ETC Source 4 19deg	5
	ETC Source 4 26deg	5
	ETC Source4 LED2LS 19deg	3
	ETC Source 4 S3 XDLT 19deg	38
	ETC Source 4 S3 XDLT 26deg	44
	ETC Source 4 S3 XDLT 36deg	27
	ETC Source 4 S3 XDLT 50deg	4
	ETC Source 4 S3 XDLT 70deg	1
	ETC Desire Fresnel USD	19
	ETC D40 Lustr SELL40	10
	ETC ColorSource CYC	18
	ETC ColorSource Linear 1	4
	ETC High End Lonestar	14

OPTICS SUMMARY

COLOR	Index	Size	Count	TEMPLATE	Index	Count
G872		6.25"	10	R77259	1	
				R78417	9	
				R78418	10	

FROST	Index	Size	Count
R119		6.25"	1
R119		6.25"	114
R132		6.25"	4



- NOTES**
- Have R119 On Hand For All Instruments At Hang
 - Have Barn Doors for Pars Available At Focus
 - Pencil Notes Take Priority Over Printed Notes

Will Loconto
LIGHTING DESIGNER
512.239.9311 / wloconto@ttu.edu

THE THREEPENNY OPERA

PRODUCTION TEAM

Dr. Bill Gelber DIRECTOR	Kaylie Jones STAGE MANAGER
Jared Roberts SCENIC DESIGNER	Josh Whitt PRODUCTION MANAGER
Meagan Woodard COSTUME DESIGNER	Natalie Mayo FACILITIES MANAGER
Oliver Loll SOUND DESIGNER	
Kyle Rainey TECHNICAL DIRECTOR	
John Conner PRODUCTION ELECTRICIAN	

This drawing represents visual concepts and construction suggestions only. The designer is not qualified to determine the structural appropriateness of this design and will not assume responsibility for improper engineering, construction, or usage. All materials, finishes, and construction must comply with the most stringent fire and safety codes as applicable.

SUBMITTALS

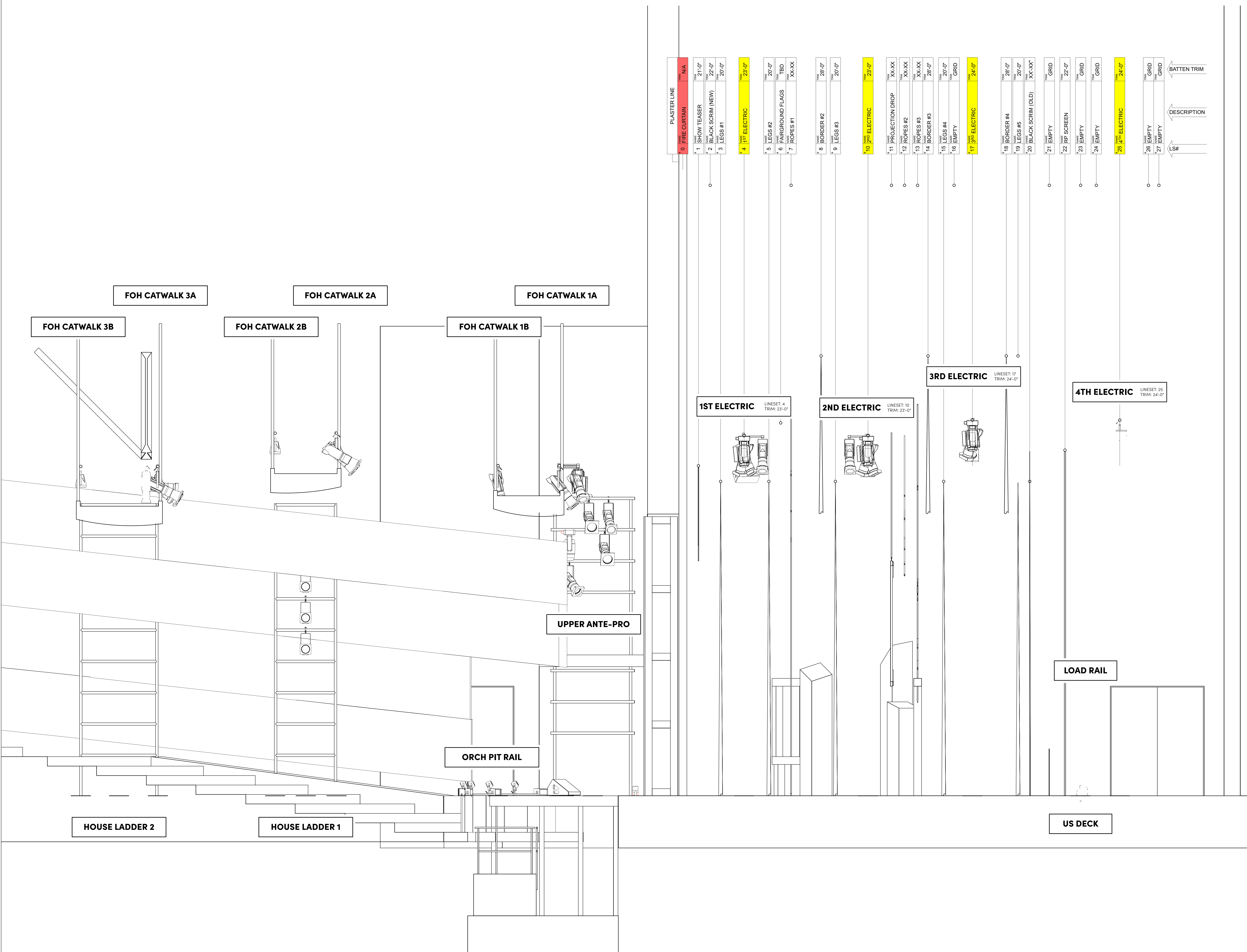
1	9/22/23	Initial Hang Plot
2	10/16/23	Focus Package

TEXAS TECH UNIVERSITY
CHARLES E. MAEDGEN JR. THEATRE

1/2" = 1' - 0"
SCALE EXCEPT WHERE NOTED
DATE 10/16/23
REVISION 10/16/23
DRAWN BY WDL

PLATE
LD 03
of 5

DECK HANG PLOT



LINESET	TRIM	DESCRIPTION
0	N/A	PLASTERLINE
1	21'-0"	SHOW TEASER
2	22'-0"	BLACK SCRIM (NEW)
3	20'-0"	LEGS #1
4	23'-0"	1 ST ELECTRIC
5	20'-0"	LEGS #2
6	TBD	FAIRGROUND FLAGS
7	XX-XX	ROPES #1
8	28'-0"	BORDER #2
9	20'-0"	LEGS #3
10	23'-0"	2 ND ELECTRIC
11	XX-XX	PROJECTION DROP
12	XX-XX	ROPES #2
13	XX-XX	ROPES #3
14	28'-0"	BORDER #3
15	20'-0"	LEGS #4
16	GRID	EMPTY
17	24'-0"	3 RD ELECTRIC
18	28'-0"	BORDER #4
19	20'-0"	LEGS #5
20	XX-XX	BLACK SCRIM (OLD)
21	GRID	EMPTY
22	22'-0"	RP SCREEN
23	GRID	EMPTY
24	GRID	EMPTY
25	24'-0"	4 TH ELECTRIC
26	GRID	EMPTY
27	GRID	EMPTY

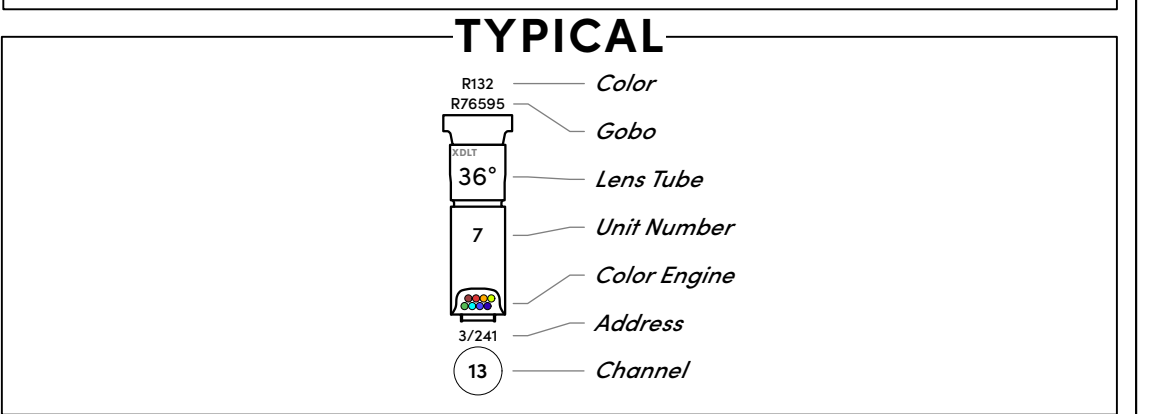
INSTRUMENTATION KEY

	ETC Source 4 19deg	5
	ETC Source 4 26deg	5
	ETC Source 4 LED2LS 19deg	3
	ETC Source 4 S3 XDLT 19deg	38
	ETC Source 4 S3 XDLT 26deg	44
	ETC Source 4 S3 XDLT 36deg	27
	ETC Source 4 S3 XDLT 50deg	4
	ETC Source 4 S3 XDLT 70deg	1
	ETC Desire Fresnel USD	19
	ETC D40 Lustr SELL40	10
	ETC ColorSource CYC	18
	ETC ColorSource Linear 1	4
	ETC High End Lonestar	14

OPTICS SUMMARY

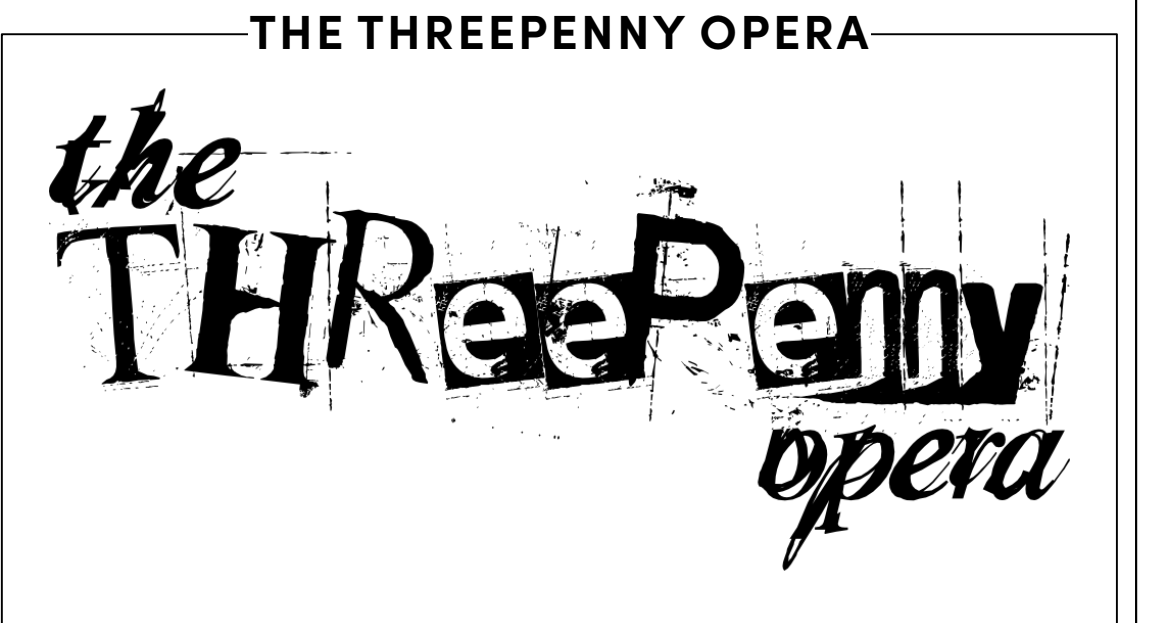
COLOR	Index	Size	Count	TEMPLATE	Index	Count
G872	6.25"	10	1	R77259	1	1
				R78417	9	9
				R78418	10	10

FROST	Index	Size	Count
R119			1
R119	6.25"	114	1
R132	6.25"	4	4



- ### NOTES
- Have R119 On Hand For All Instruments At Hang
 - Have Barn Doors for Pars Available At Focus
 - Pencil Notes Take Priority Over Printed Notes

Will Loconto
LIGHTING DESIGNER
512.239.9311 / wloconto@ttu.edu



PRODUCTION TEAM

Dr. Bill Gelber DIRECTOR	Kaylie Jones STAGE MANAGER
Jared Roberts SCENIC DESIGNER	Josh Whitt PRODUCTION MANAGER
Meagan Woodard COSTUME DESIGNER	Natalie Mayo FACILITIES MANAGER
Oliver Loll SOUND DESIGNER	
Kyle Rainey TECHNICAL DIRECTOR	
John Conner PRODUCTION ELECTRICIAN	

This drawing represents visual concepts and construction suggestions only. The designer is not qualified to determine the structural appropriateness of this design and will not assume responsibility for improper engineering, construction, or usage. All materials, finishes, and construction must comply with the most stringent fire and safety codes as applicable.

SUBMITTALS

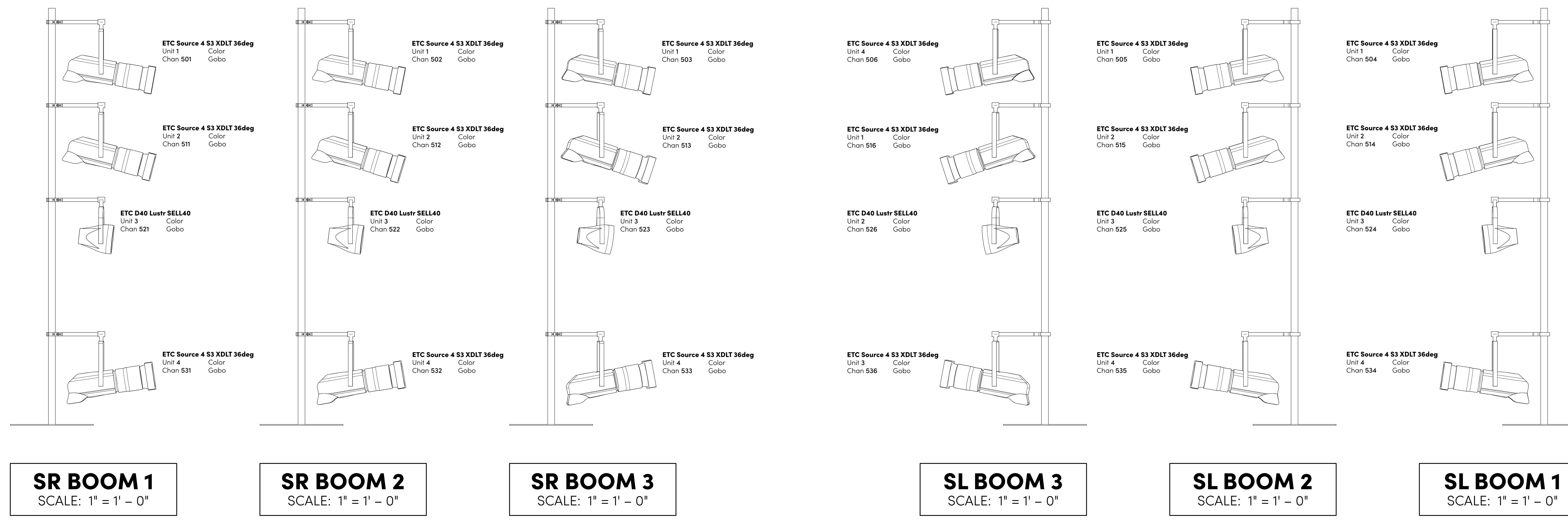
1	9/22/23	Initial Hang Plot
2	10/16/23	Focus Package

TEXAS TECH UNIVERSITY
CHARLES E. MAEDGEN JR. THEATRE

1/2" = 1' - 0"	PLATE
SCALE EXCEPT WHERE NOTED	LD 04
DATE 10/16/23	of 5
REVISION	DRAWN BY WDL

CENTERLINE SECTION

BOOMS VIEWED LOOKING UPSTAGE



ONSTAGE

ONSTAGE

NOTE: Booms removed from production due to space limitations.

NOTE: Booms removed from production due to space limitations.

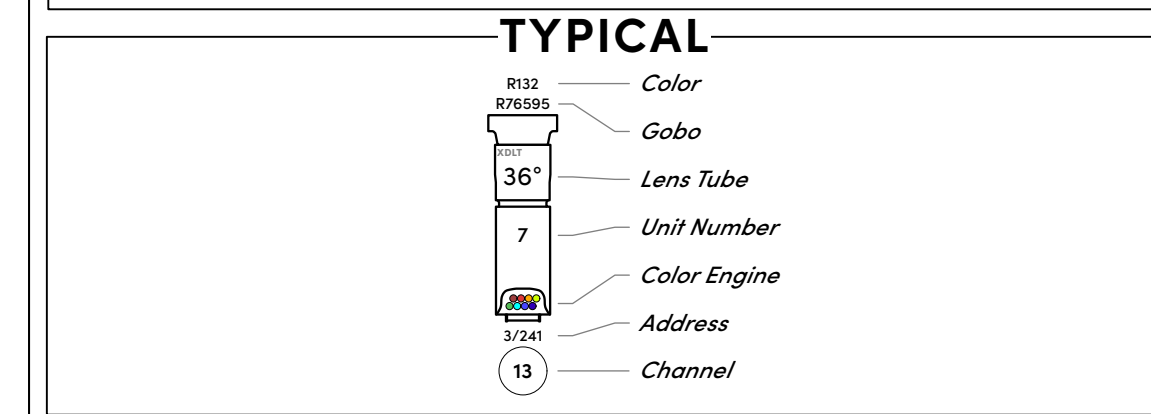
INSTRUMENTATION KEY

	ETC Source 4 19deg	5
	ETC Source 4 26deg	5
	ETC Source 4 LED2LS 19deg	3
	ETC Source 4 S3 XDLT 19deg	38
	ETC Source 4 S3 XDLT 26deg	44
	ETC Source 4 S3 XDLT 36deg	27
	ETC Source 4 S3 XDLT 50deg	4
	ETC Source 4 S3 XDLT 70deg	1
	ETC Desire Fresnel USD	19
	ETC D40 Lustr SELL40	10
	ETC ColorSource CYC	18
	ETC ColorSource Linear 1	4
	ETC High End Lonestar	14

OPTICS SUMMARY

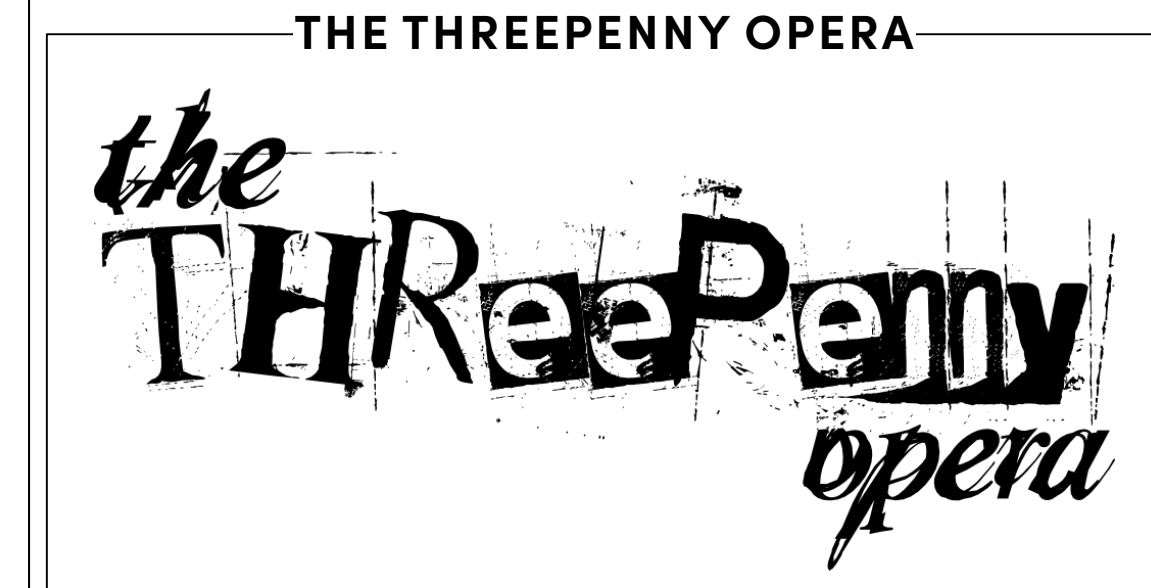
COLOR			TEMPLATE		
Index	Size	Count	Index	Count	
G872	6.25"	10	R77259	1	
			R78417	9	
			R78418	10	

FROST		
Index	Size	Count
R119		1
R119	6.25"	114
R132	6.25"	4



- NOTES**
- Have R119 On Hand For All Instruments At Hang
 - Have Barn Doors For Pars Available At Focus
 - Pencil Notes Take Priority Over Printed Notes

Will Loconto
LIGHTING DESIGNER
512.239.9311 / wloconto@tu.edu



PRODUCTION TEAM

Dr. Bill Gelber DIRECTOR	Kaylie Jones STAGE MANAGER
Jared Roberts SCENIC DESIGNER	Josh Whitt PRODUCTION MANAGER
Meagan Woodard COSTUME DESIGNER	Natalie Mayo FACILITIES MANAGER
Oliver Loll SOUND DESIGNER	
Kyle Rainey TECHNICAL DIRECTOR	
John Conner PRODUCTION ELECTRICIAN	

This drawing represents visual concepts and construction suggestions only. The designer is not qualified to determine the structural appropriateness of this design and will not assume responsibility for improper engineering, construction, or usage. All materials, finishes, and construction must comply with the most stringent fire and safety codes as applicable.

SUBMITTALS

1	9/22/23	Initial Hang Plot
2	10/16/23	Focus Package

TEXAS TECH UNIVERSITY
CHARLES E. MAEDGEN JR. THEATRE

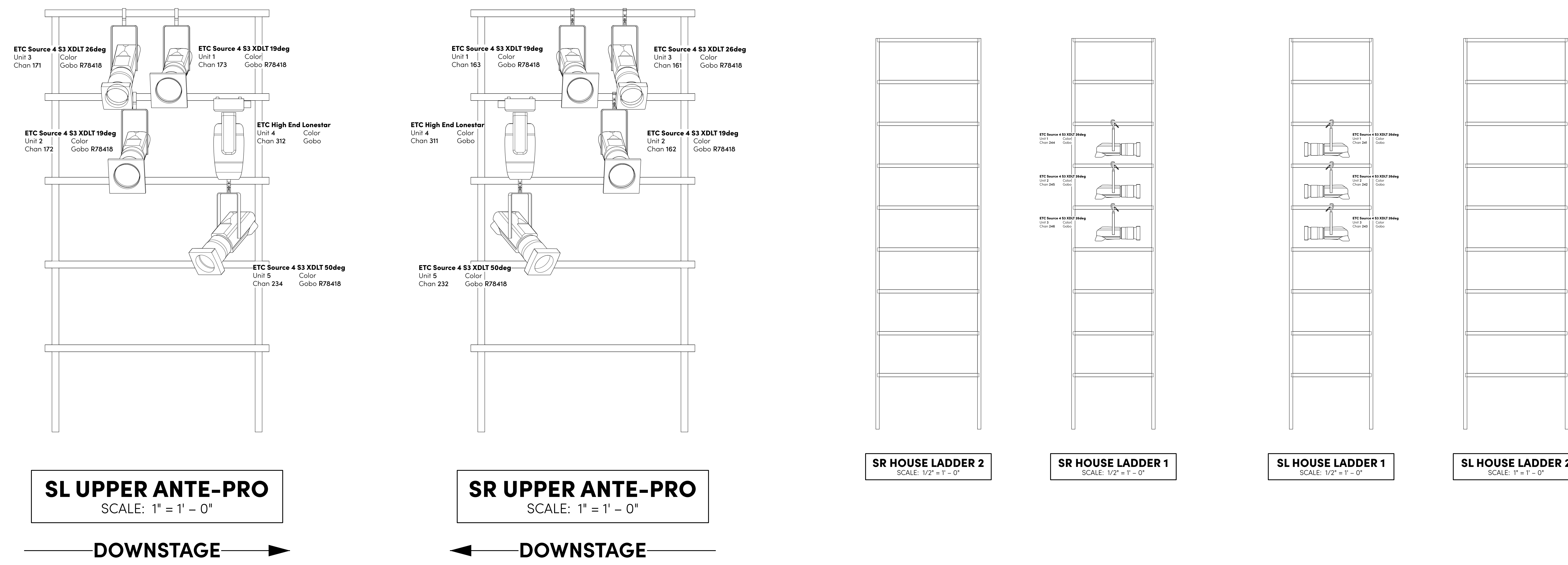
1/2" = 1' - 0"
SCALE EXCEPT WHERE NOTED

DATE: 10/16/23
REVISION: 10/16/23

PLATE
LD 05
of 5

DRAWN BY: WDL

ANTE-PROS & LADDERS VIEWED FROM HOUSE



DOWNSTAGE

DOWNSTAGE