

INSTRUMENTATION KEY

	ETC ColorSource Spot 19deg	10
	ETC ColorSource Spot 26deg	21
	ETC ColorSource Spot 26deg Deep Blue	18
	ETC ColorSource Spot 36deg	17
	ETC ColorSource Spot 36deg Deep Blue	2
	ETC ColorSource Spot 50deg Deep Blue	6
	ETC ColorSource Spot 90deg	4
	ETC ColorSource PAR Deep Blue Medium Round	34
	ETC ColorSource CYC	11
	Blizzard Lighting Tour QT IP Skywire	8
	Desk Practical	8
	Ceiling Practical	4
	Martin MAC Encore Performance CLD	2
	High End Systems SoloSpot Pro 2000	2

TYPICAL

R76595 Gobo
 19" Lens Degree
 DB / Non-DB DB Purpose / Focus
 Unit Number 4 Engine
 Universe / Address 3/221 Channel
 1

NOTES

- Have R19 On Hand For All Instruments At Hang
- Have Barn Doors for PARs Available At Focus
- Pencil Notes Take Priority Over Printed Notes

Will Loconto
 LIGHTING DESIGNER
 (512) 239 9311 • wloconto@ttu.edu

THE SECRETARIES

A Foundation Brothers play written by Marlene Angello, Bala Deyy, Dawn Marie O'Neil, Peg Henny, and Lisa Klein

PRODUCTION TEAM
TEXAS TECH UNIVERSITY

Director	Sarah Mayhew
Scenic Designer	Matthew Chilcoat
Costume Designer	Olivia Carlin
Sound Designer	Oliver Loll
Stage Manager	Kaylie Jones
Production Manager	Josh Whitt
Production Electrician	Kyle Jensen

This drawing represents visual concepts and construction suggestions only. The designer is not qualified to determine the structural appropriateness of this design and will not assume responsibility for improper engineering, construction, or usage. All materials, finishes, and construction must comply with the most stringent fire and safety codes as applicable.

SUBMITTALS

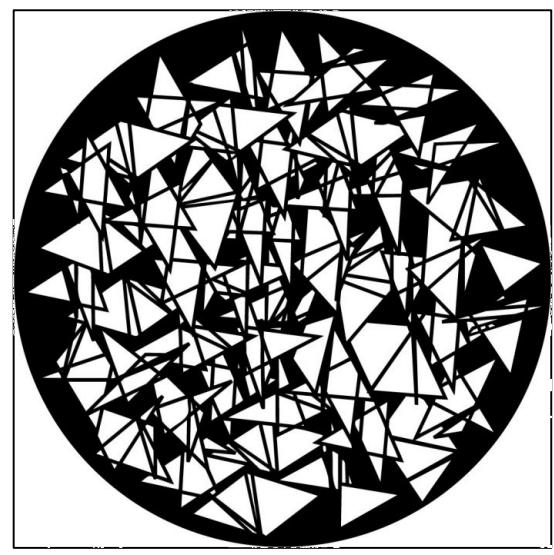
11/30/22	Greenlight Package
1/10/23	Initial Hang
1/17/23	Updated Hang

The CH Foundation The Legacy of Christine DeVitt Black Box Theatre

3/8" = 1' - 0"	PLATE
SCALE EXCEPT WHERE NOTED	
1/17/2023	LD 01
DATE	of 8
1/17/2023	
REVISION	
DRAWN BY WDL	

FULL SYSTEM PLOT

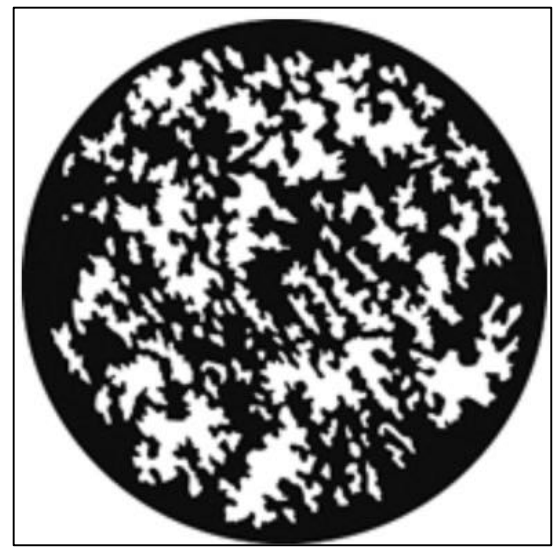
GOBO SELECTION ORDER



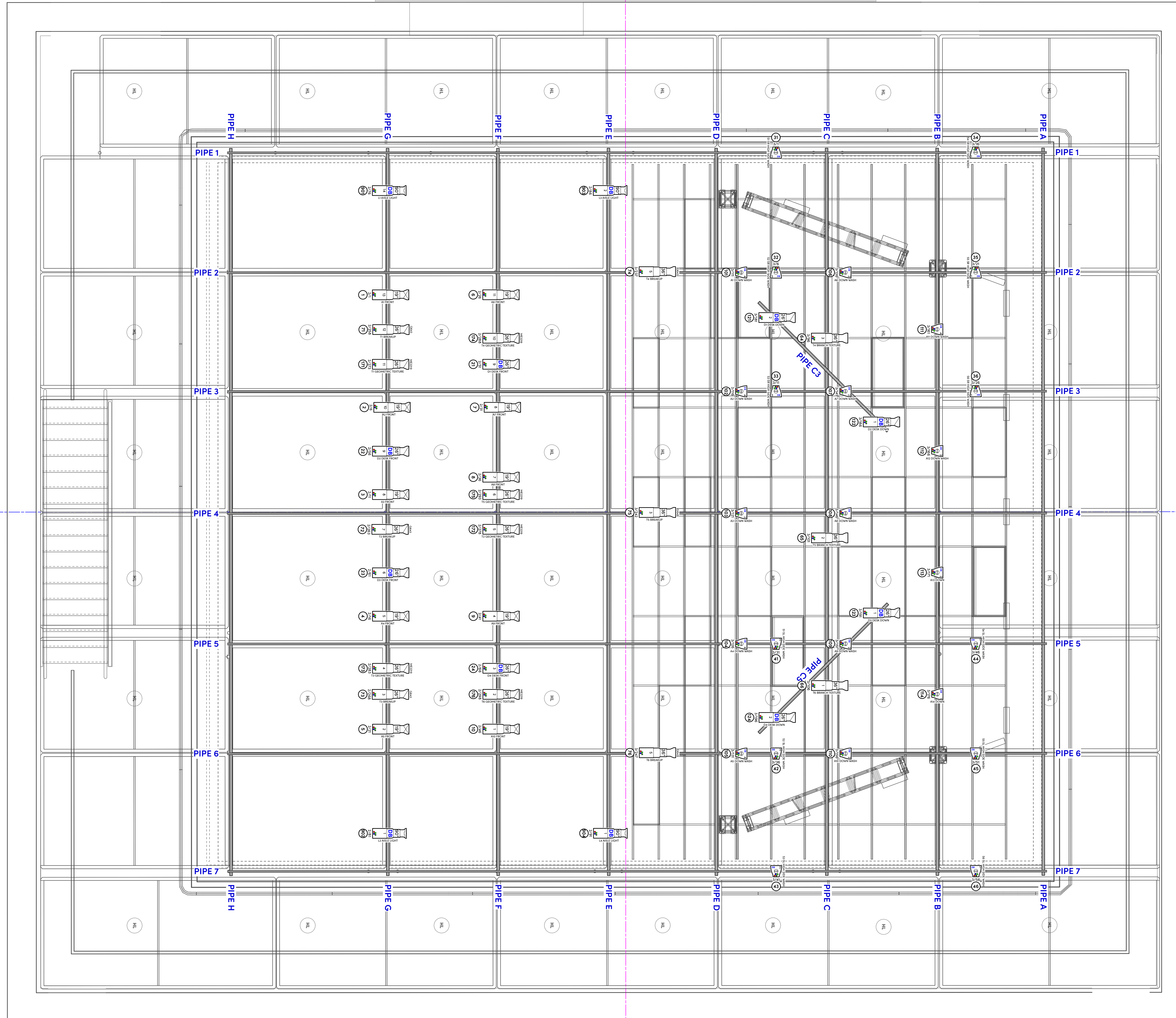
APOLLO ME2219
 Backstabber | Qty 6



ROSCO R77100
 Tree 2 | Qty 3



GAM G643
 Moonscape | Qty 6



INSTRUMENTATION KEY

	ETC ColorSource Spot 19deg	10
	ETC ColorSource Spot 26deg	21
	ETC ColorSource Spot 26deg Deep Blue	18
	ETC ColorSource Spot 36deg	17
	ETC ColorSource Spot 36deg Deep Blue	2
	ETC ColorSource Spot 50deg Deep Blue	6
	ETC ColorSource Spot 90deg	4
	ETC ColorSource PAR Deep Blue Medium Round	34
	ETC ColorSource CYC	11
	Blizzard Lighting Tour QT IP Skywire	8
	Desk Practical	8
	Ceiling Practical	4
	Martin MAC Encore Performance CLD	2
	High End Systems SoloSpot Pro 2000	2

TYPICAL

R26595..... Gobo
 Lens Degree
 DB / Non-DB DB
 Unit Number 4 Purpose / Focus
 Universe / Address 3/221 Engine
 Channel

NOTES

- Have R19 On Hand For All Instruments At Hang
- Have Barn Doors For PARs Available At Focus
- Pencil Notes Take Priority Over Printed Notes

Will Loconto
 LIGHTING DESIGNER
 (512) 239 9311 • wloconto@ttu.edu

THE SECRETARIES

A Full-Cast Brothers play written by Matthew Angolis, Bala Deyy, Doreen O'Donnell, Peg Henny, and Lisa Klein

PRODUCTION TEAM TEXAS TECH UNIVERSITY

Director	Sarah Mayhew
Scenic Designer	Matthew Chilcoat
Costume Designer	Olivia Carlin
Sound Designer	Oliver Loll
Stage Manager	Kaylie Jones
Production Manager	Josh Whitt
Production Electrician	Kyle Jensen

This drawing represents visual concepts and construction suggestions only. The designer is not qualified to determine the structural appropriateness of this design and will not assume responsibility for improper engineering, construction, or usage. All materials, finishes, and construction must comply with the most stringent fire and safety codes as applicable.

SUBMITTALS

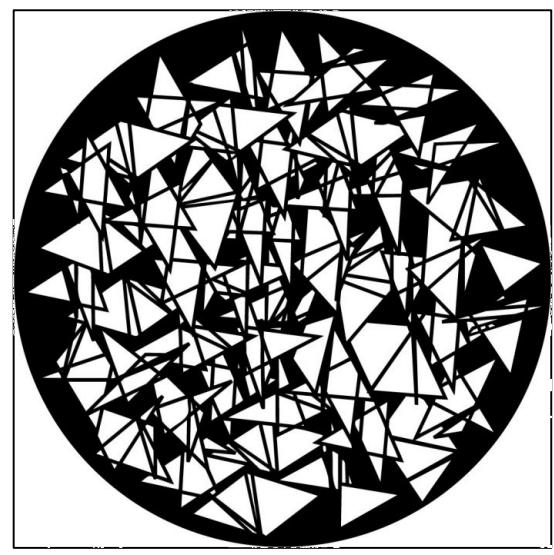
11/30/22	Greenlight Package
1/10/23	Initial Hang
1/17/23	Updated Hang

The CH Foundation The Legacy of Christine DeVitt Black Box Theatre

3/8" = 1' - 0"	SCALE EXCEPT WHERE NOTED	PLATE
1/17/2023	DATE	LD 02 of 8
1/17/2023	REVISION	
DRAWN BY WDL		

TWG LIGHT PLOT

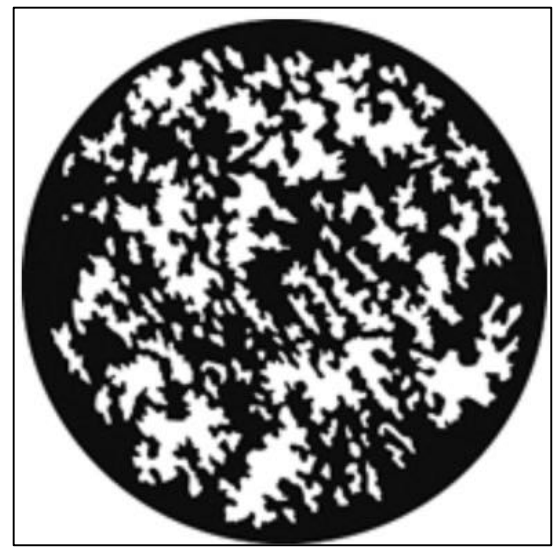
GOBO SELECTION ORDER



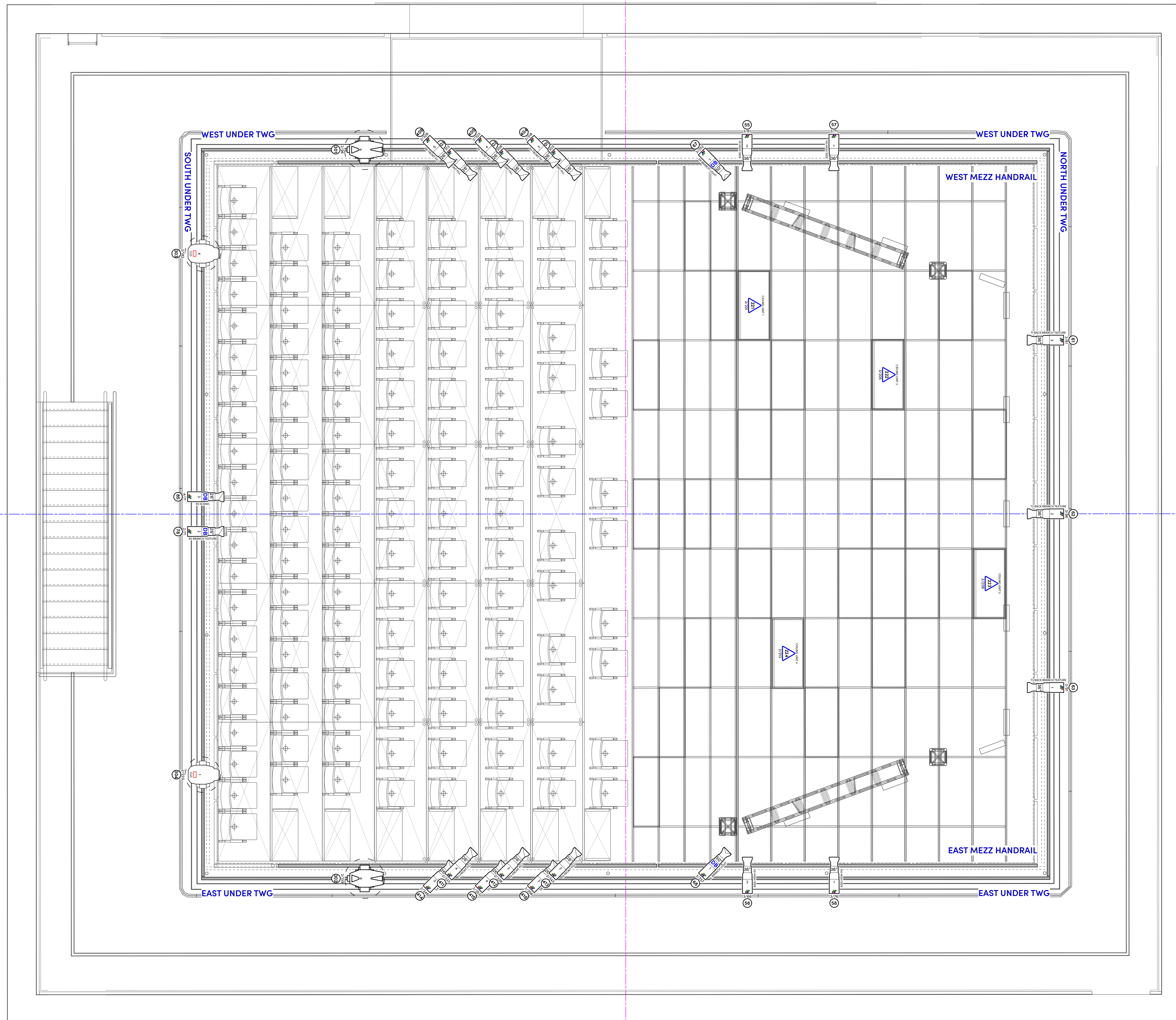
APOLLO ME2219
Backstabber | Qty 6



ROSCO R77100
Tree 2 | Qty 3



GAM G643
Moonscape | Qty 6



INSTRUMENTATION KEY

	ETC ColorSource Spot 19deg	10
	ETC ColorSource Spot 26deg	21
	ETC ColorSource Spot 26deg Deep Blue	18
	ETC ColorSource Spot 36deg	17
	ETC ColorSource Spot 36deg Deep Blue	2
	ETC ColorSource Spot 50deg Deep Blue	6
	ETC ColorSource Spot 90deg	4
	ETC ColorSource PAR Deep Blue Medium Round	34
	ETC ColorSource CYC	11
	Blizzard Lighting Tour QT IP Skywire	8
	Desk Practical	8
	Ceiling Practical	4
	Martin MAC Encore Performance CLD	2
	High End Systems SoloSpot Pro 2000	2

TYPICAL

R26595 Gobo

19° Lens Degree

DB / Non-DB: DB Purpose / Focus

Unit Number: 4

Engine

Universe / Address: 3/221

Channel: 1

NOTES

- Have R19 On Hand For All Instruments At Hang
- Have Barn Doors for PARs Available At Focus
- Pencil Notes Take Priority Over Printed Notes

Will Loconto
 LIGHTING DESIGNER
 (512) 239 9311 • wloconto@ttu.edu

THE SECRETARIES

A Full-Cast Non-Brothers play written by Maura Angello, Betsy Day, Dawn Marie O'Neil, Peg Henny, and Lisa Kinn

PRODUCTION TEAM
TEXAS TECH UNIVERSITY

Director	Sarah Mayhew
Scenic Designer	Matthew Chilcoat
Costume Designer	Olivia Carlin
Sound Designer	Oliver Loll
Stage Manager	Kaylie Jones
Production Manager	Josh Whitt
Production Electrician	Kyle Jensen

This drawing represents visual concepts and construction suggestions only. The designer is not qualified to determine the structural appropriateness of this design and will not assume responsibility for improper engineering, construction, or usage. All materials, finishes, and construction must comply with the most stringent fire and safety codes as applicable.

SUBMITTALS

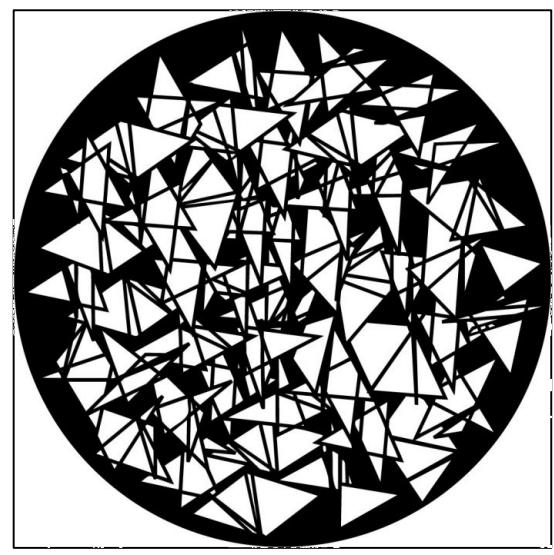
11/30/22	Greenlight Package
1/10/23	Initial Hang
1/17/23	Updated Hang

The CH Foundation The Legacy of Christine DeVitt Black Box Theatre

3/8" = 1' - 0"	SCALE EXCEPT WHERE NOTED	PLATE
1/17/2023	DATE	LD 03 of 8
1/17/2023	REVISION	
DRAWN BY WDL		

MEZZANINE LIGHT PLOT

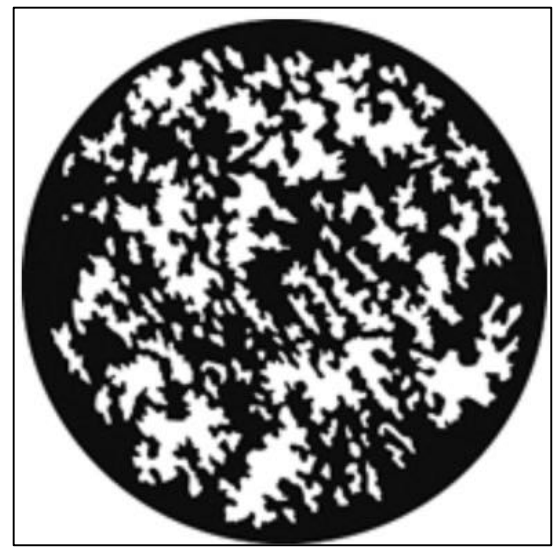
GOGO SELECTION ORDER



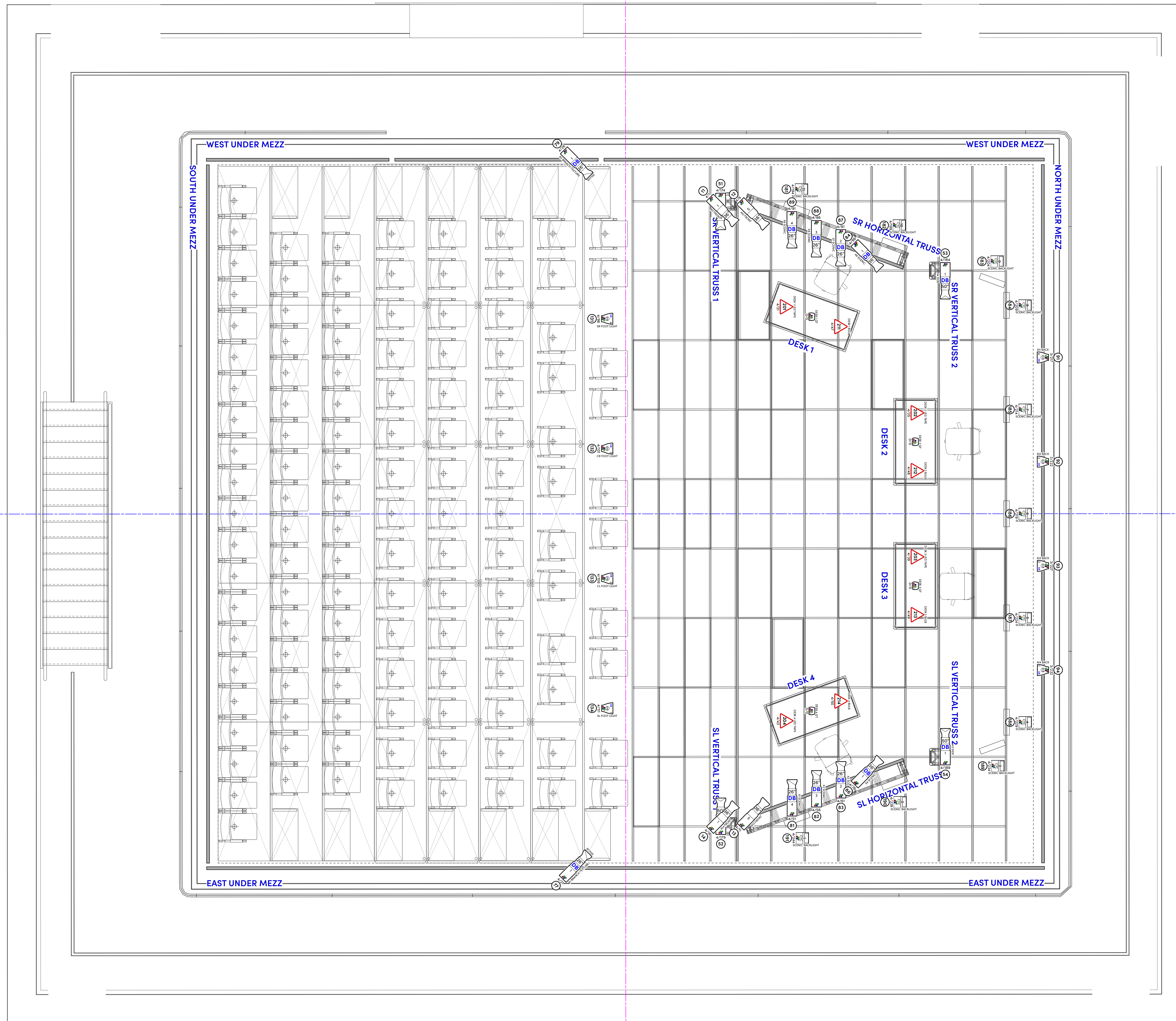
APOLLO ME2219
Backstabber | Qty 6



ROSCO R77100
Tree 2 | Qty 3



GAM G643
Moonscape | Qty 6



INSTRUMENTATION KEY

	ETC ColorSource Spot 19deg	10
	ETC ColorSource Spot 26deg	21
	ETC ColorSource Spot 26deg Deep Blue	18
	ETC ColorSource Spot 36deg	17
	ETC ColorSource Spot 36deg Deep Blue	2
	ETC ColorSource Spot 50deg Deep Blue	6
	ETC ColorSource Spot 90deg	4
	ETC ColorSource PAR Deep Blue Medium Round	34
	ETC ColorSource CYC	11
	Blizzard Lighting Tour QT IP Skywire	8
	Desk Practical	8
	Ceiling Practical	4
	Martin MAC Encore Performance CLD	2
	High End Systems SoloSpot Pro 2000	2

TYPICAL

	Gobo
	DB / Non-DB
	Unit Number
	Universe / Address
	Channel

19" Lens Degree
4 Purpose / Focus
3/221 Engine
1 Channel

NOTES

- Have R19 On Hand For All Instruments At Hang
- Have Barn Doors for PARs Available At Focus
- Pencil Notes Take Priority Over Printed Notes

Will Loconto
LIGHTING DESIGNER
(512) 239 9311 • wloconto@ttu.edu

THE SECRETARIES

A Full-Cast Non-Brothers play written by Maura Angello, Bala Dey, Doreen O'Sullivan, Peg Henny, and Lisa Kinn

PRODUCTION TEAM TEXAS TECH UNIVERSITY

Director	Sarah Mayhew
Scenic Designer	Matthew Chilcoat
Costume Designer	Olivia Carlin
Sound Designer	Oliver Loll
Stage Manager	Kaylie Jones
Production Manager	Josh Whitt
Production Electrician	Kyle Jensen

This drawing represents visual concepts and construction suggestions only. The designer is not qualified to determine the structural appropriateness of this design and will not assume responsibility for improper engineering, construction, or usage. All materials, finishes, and construction must comply with the most stringent fire and safety codes as applicable.

SUBMITTALS

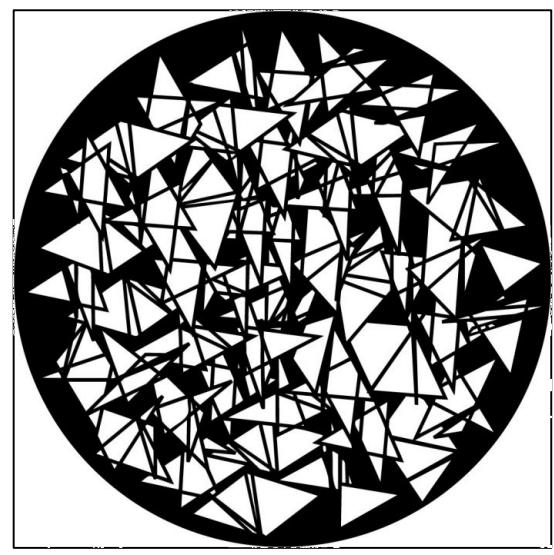
11/30/22	Greenlight Package
1/10/23	Initial Hang
1/17/23	Updated Hang

The CH Foundation The Legacy of Christine DeVitt Black Box Theatre

3/8" = 1' - 0" SCALE EXCEPT WHERE NOTED	PLATE
1/17/2023 DATE	LD 04 of 8
1/17/2023 REVISION	
DRAWN BY WDL	

STAGE LEVEL LIGHT PLOT

GOBO SELECTION ORDER



APOLLO ME2219
Backstabber | Qty 6

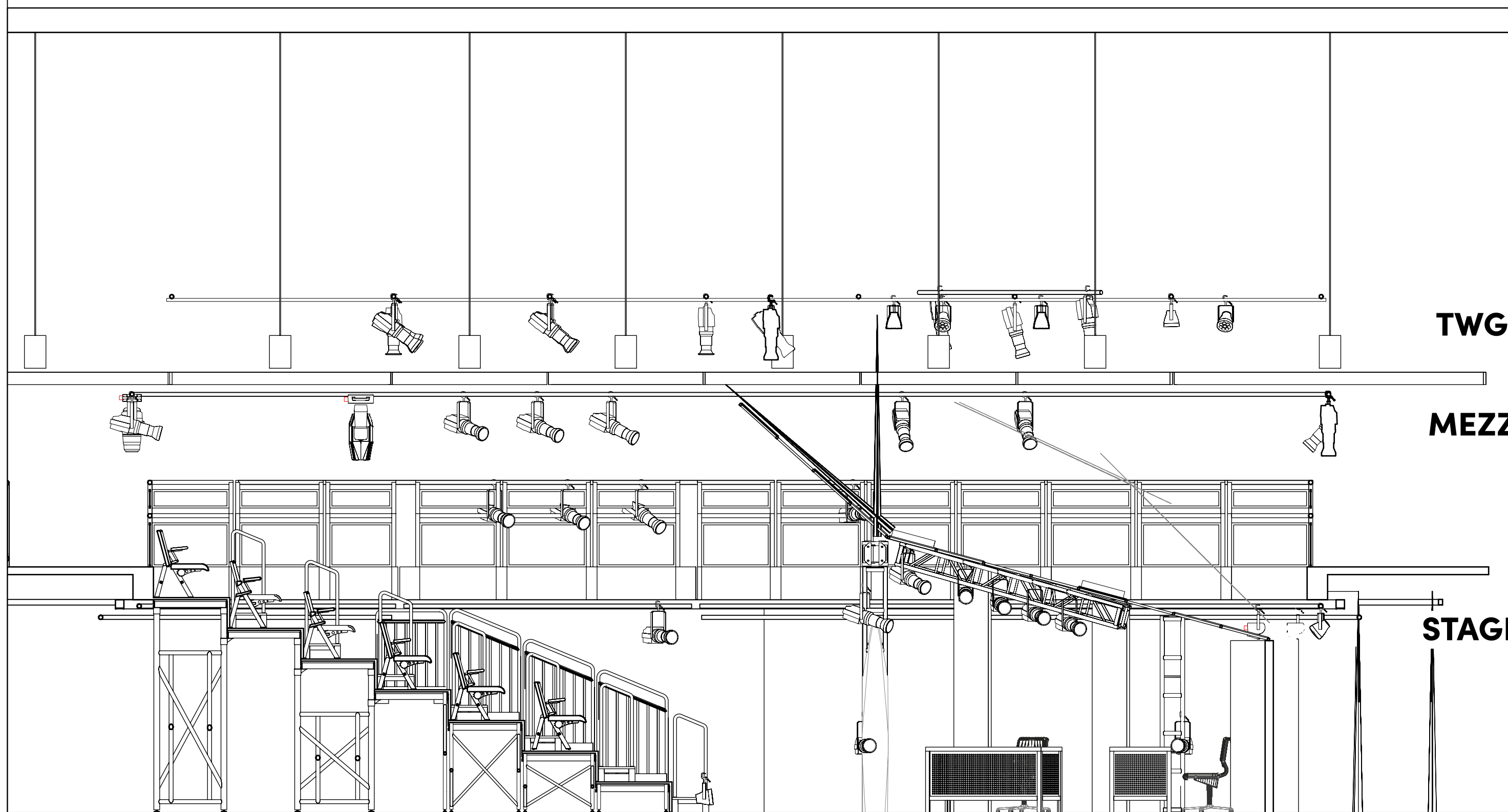


ROSCO R77100
Tree 2 | Qty 3

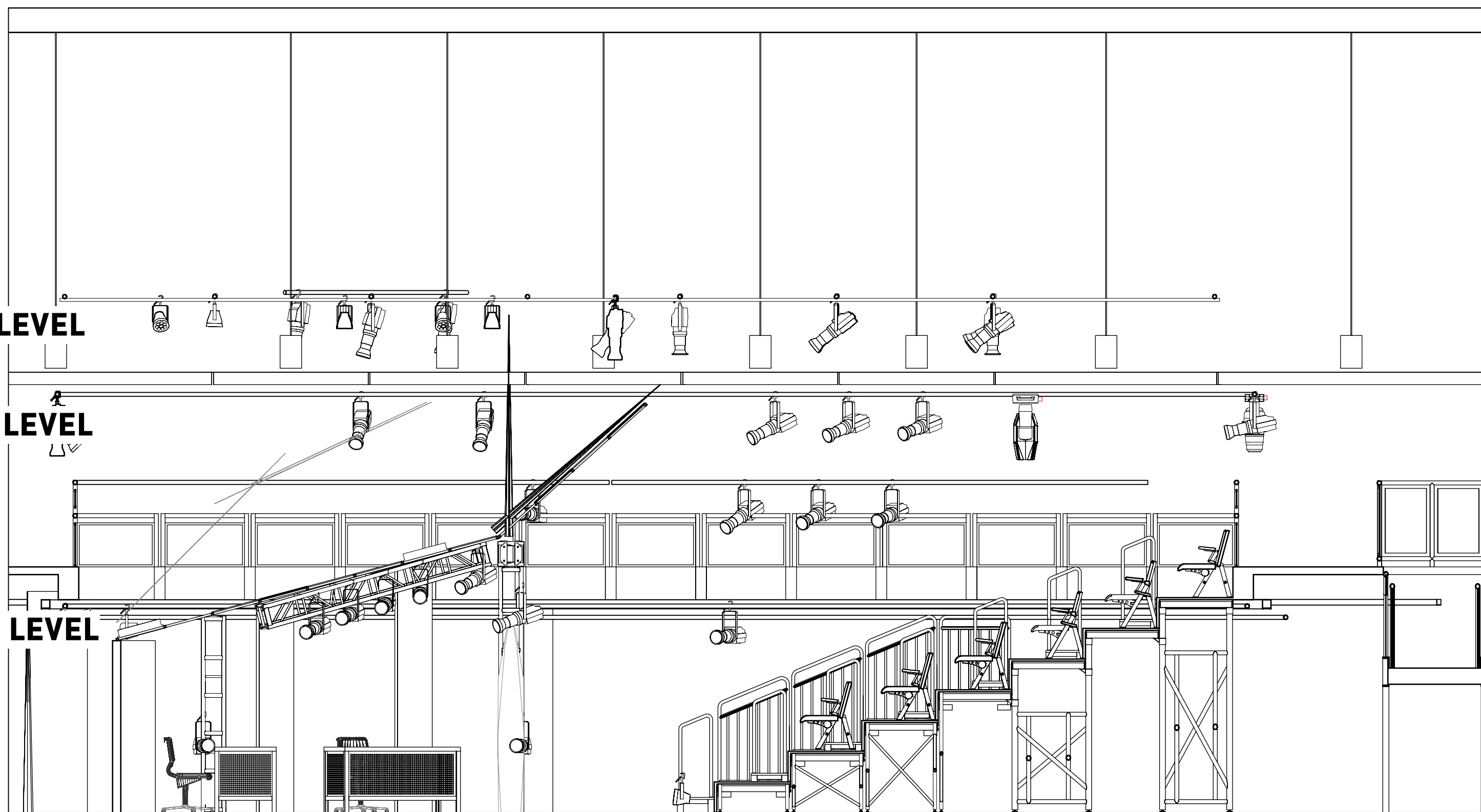


GAM G643
Moonscape | Qty 6

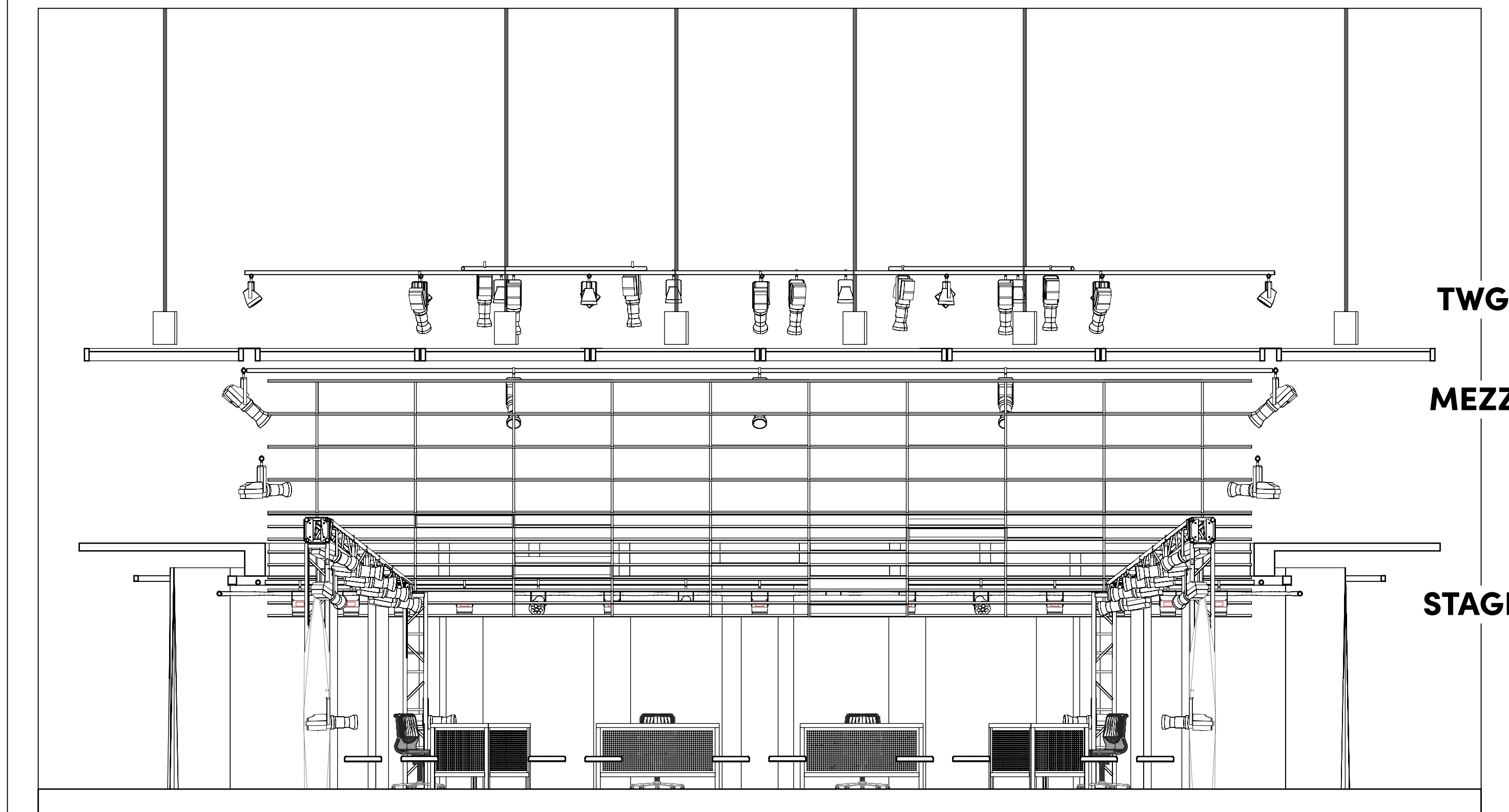
FACING STAGE RIGHT



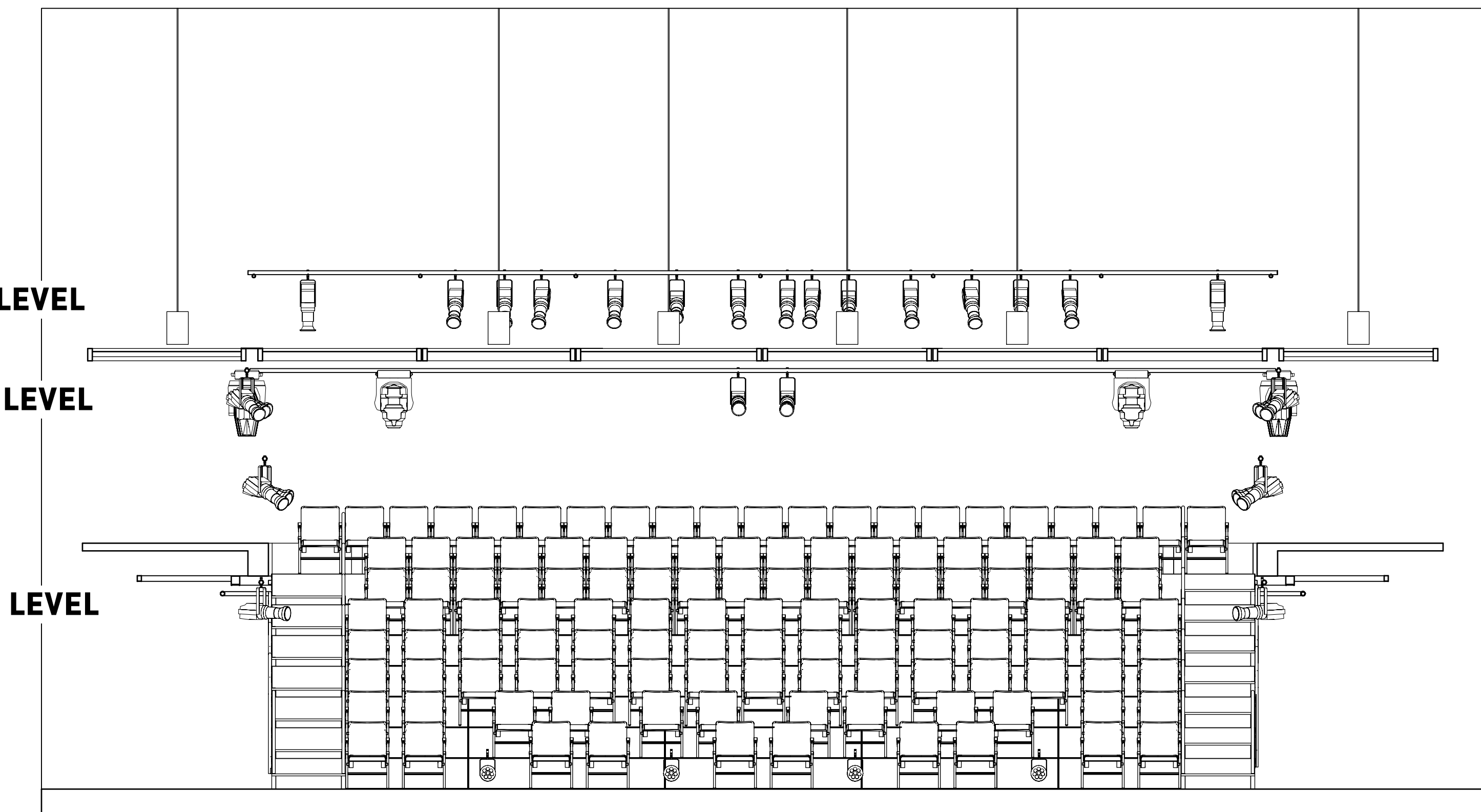
FACING STAGE LEFT



FACING UPSTAGE



FACING DOWNSTAGE



INSTRUMENTATION KEY

	ETC ColorSource Spot 19deg	10
	ETC ColorSource Spot 26deg	21
	ETC ColorSource Spot 26deg Deep Blue	18
	ETC ColorSource Spot 36deg	17
	ETC ColorSource Spot 36deg Deep Blue	2
	ETC ColorSource Spot 50deg Deep Blue	6
	ETC ColorSource Spot 90deg	4
	ETC ColorSource PAR Deep Blue Medium Round	34
	ETC ColorSource CYC	11
	Blizzard Lighting Tour QT IP Skywire	8
	Desk Practical	8
	Ceiling Practical	4
	Martin MAC Encore Performance CLD	2
	High End Systems SoloSpot Pro 2000	2

TYPICAL

	R26595	Gobo
	19°	Lens Degree
	DB	Purpose / Focus
	4	Unit Number
	3/221	Engine
	1	Channel

Universe / Address: 3/221

NOTES

- Have R19 On Hand For All Instruments At Hang
- Have Barn Doors for PARs Available At Focus
- Pencil Notes Take Priority Over Printed Notes

Will Loconto
LIGHTING DESIGNER
(512) 239 9311 • wloconto@ttu.edu

THE SECRETARIES

A Franchiser Brothers play written by Marlene Angelos, Bob Drey, Donny O'Donnell, Peg Henny, and Lisa Klein

PRODUCTION TEAM
TEXAS TECH UNIVERSITY

Director	Sarah Mayhew
Scenic Designer	Matthew Chilcoat
Costume Designer	Olivia Carlin
Sound Designer	Oliver Loll
Stage Manager	Kaylie Jones
Production Manager	Josh Whitt
Production Electrician	Kyle Jensen

This drawing represents visual concepts and construction suggestions only. The designer is not qualified to determine the structural appropriateness of this design and will not assume responsibility for improper engineering, construction, or usage. All materials, finishes, and construction must comply with the most stringent fire and safety codes as applicable.

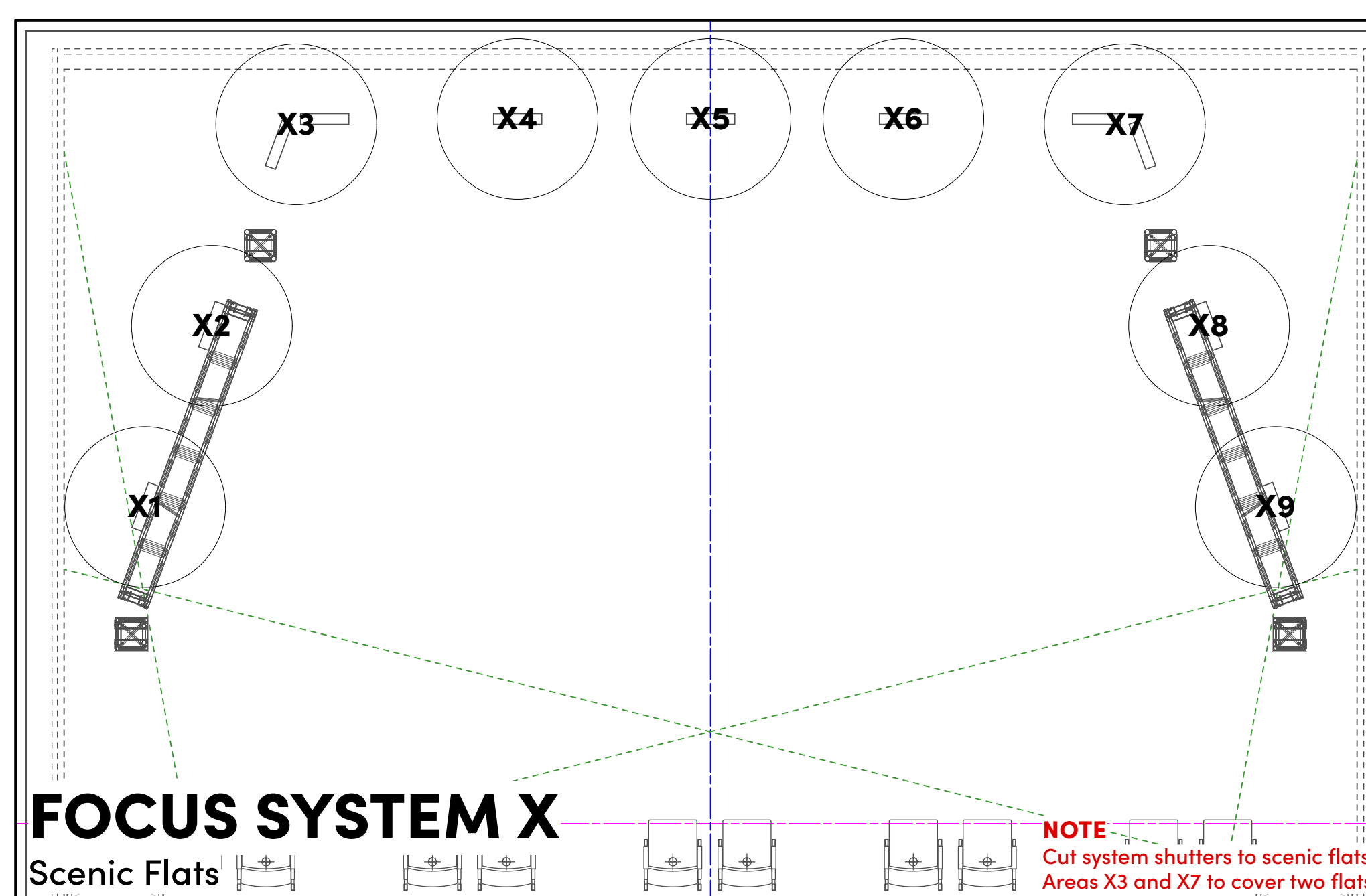
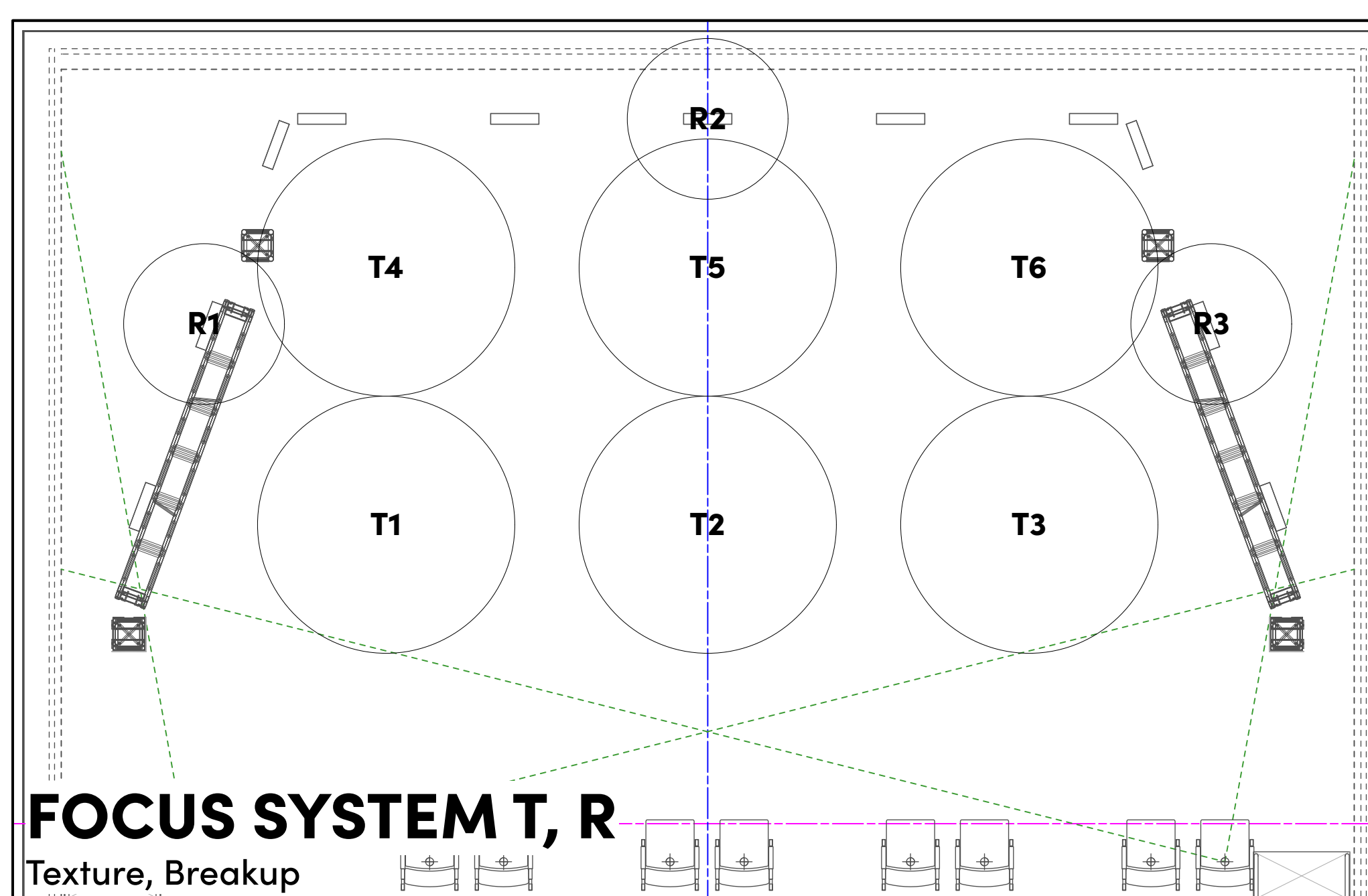
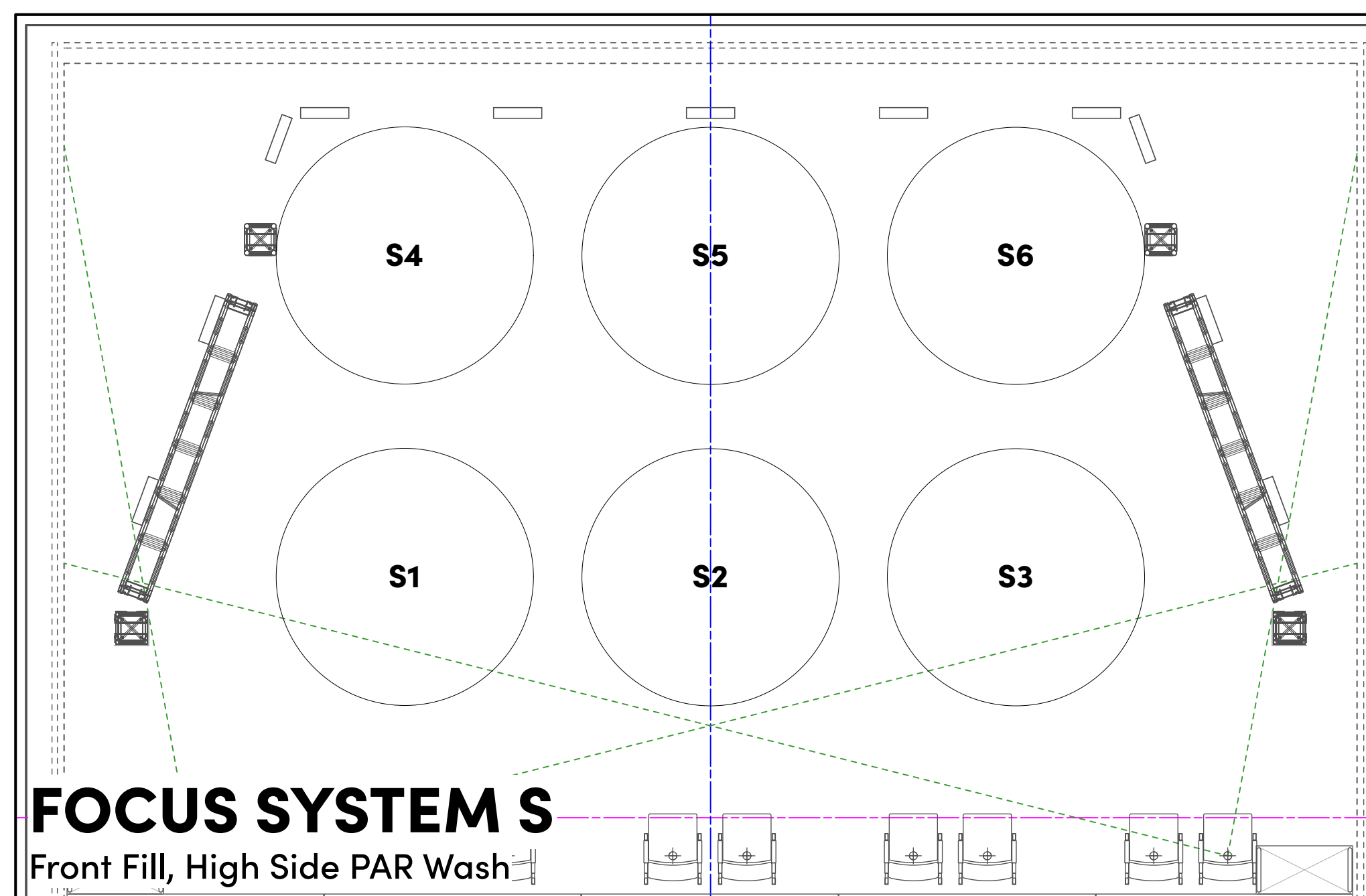
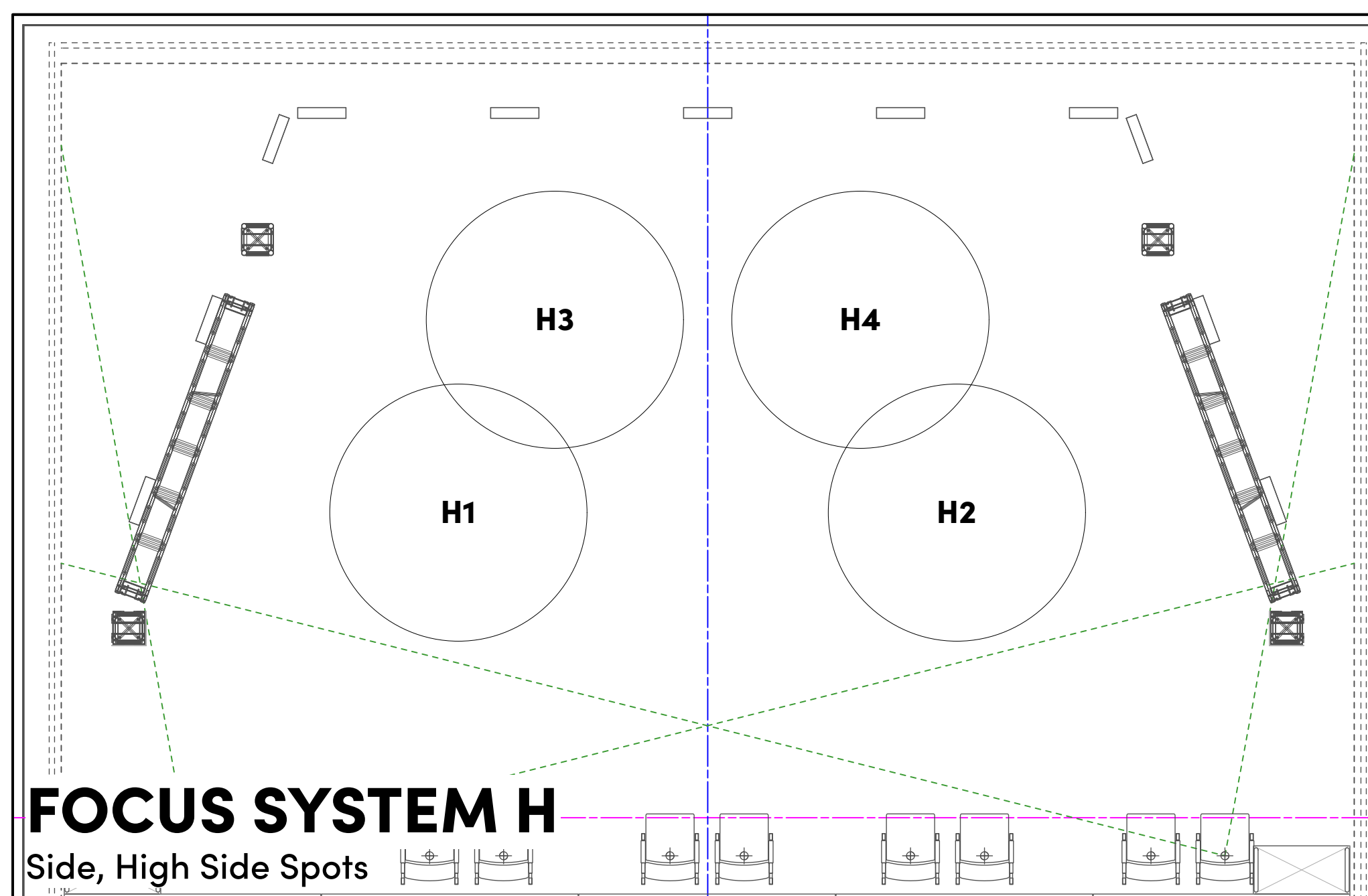
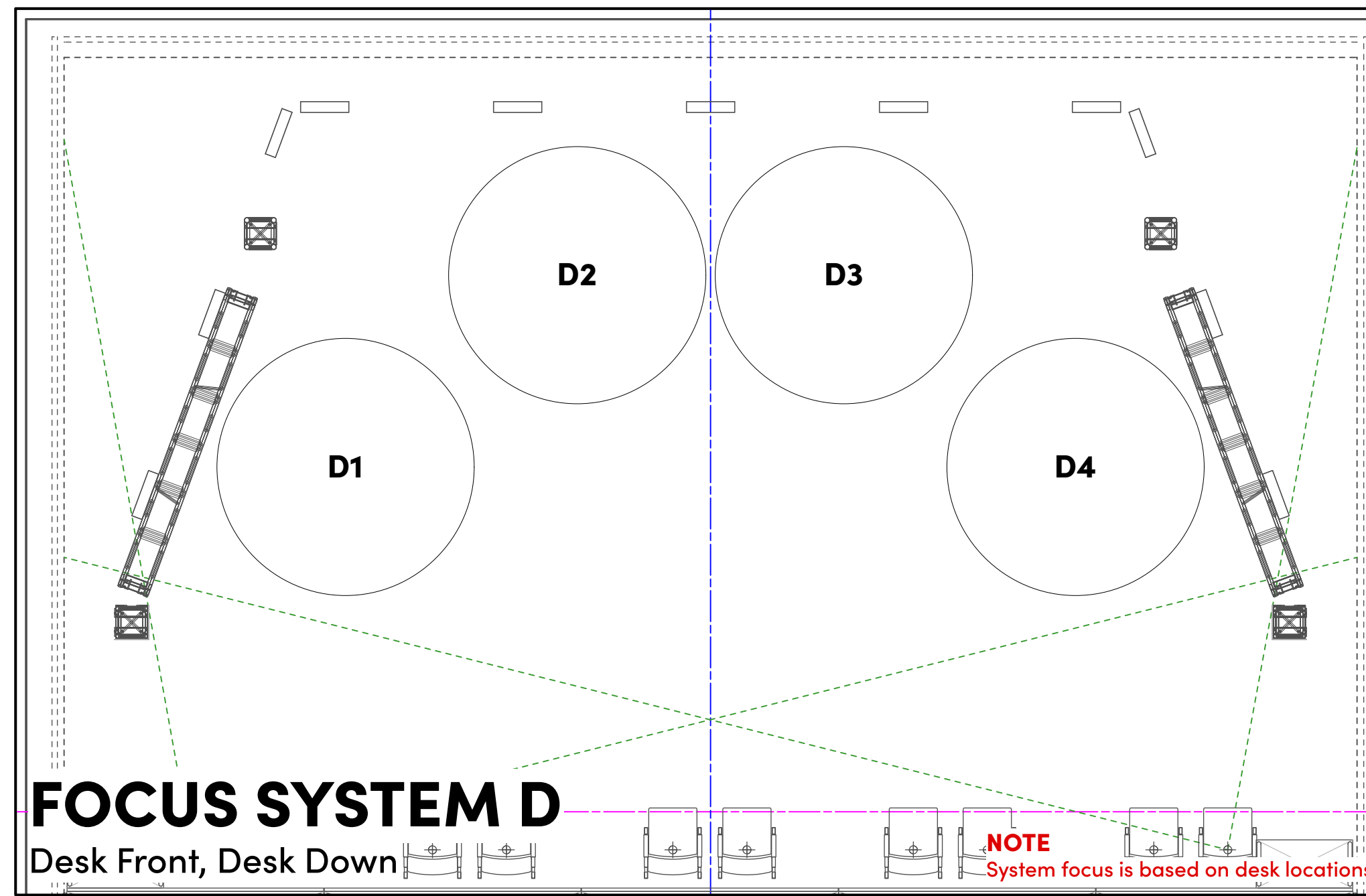
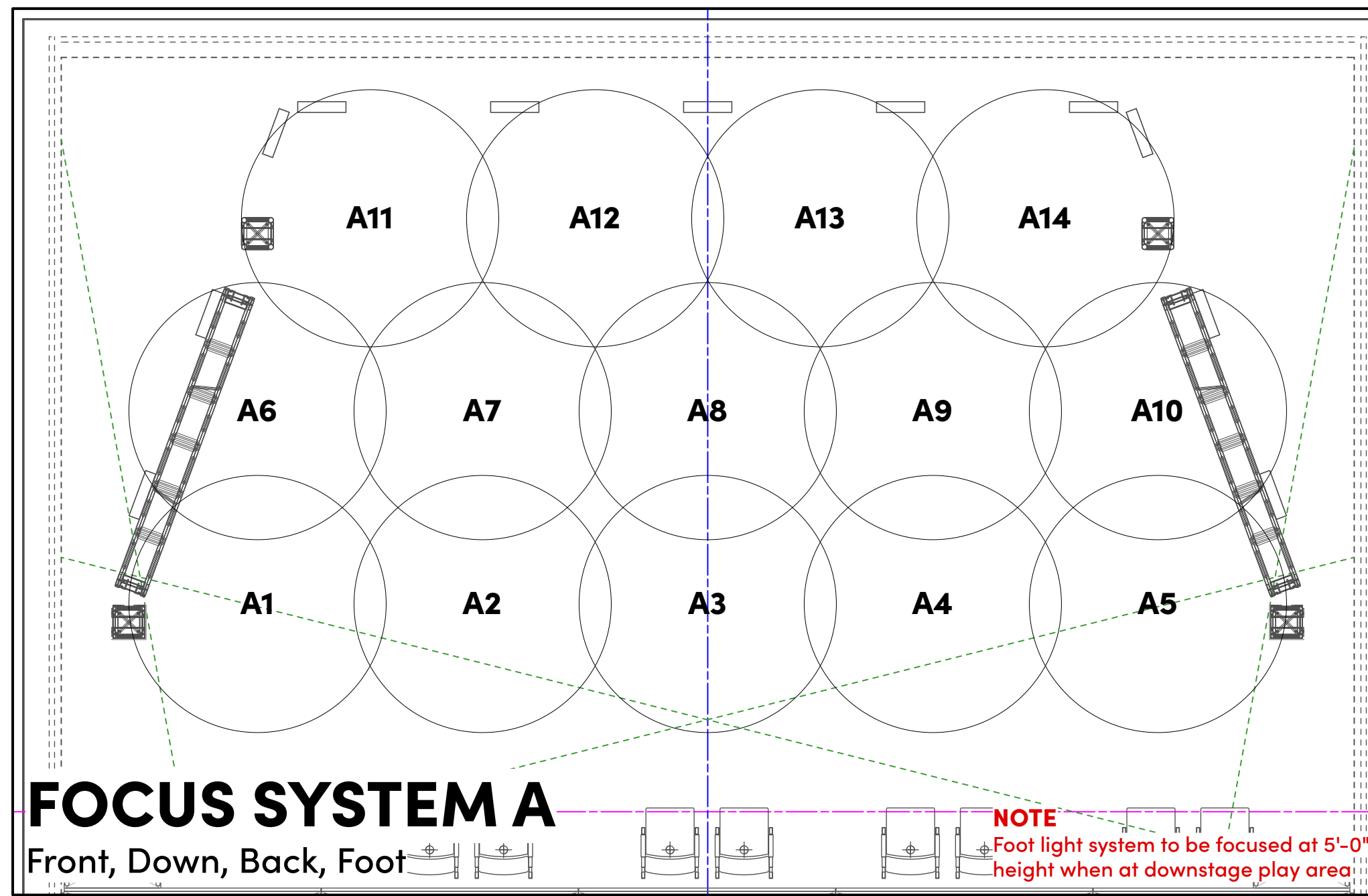
SUBMITTALS

11/30/22	Greenlight Package
1/10/23	Initial Hang
1/17/23	Updated Hang

The CH Foundation The Legacy of Christine DeVitt Black Box Theatre

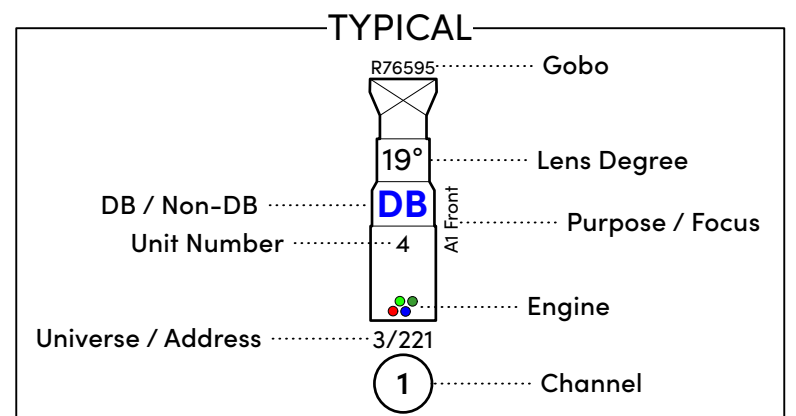
1/4" = 1' - 0" SCALE EXCEPT WHERE NOTED	PLATE
1/17/2023 DATE	LD 05
1/17/2023 REVISION	of 8
DRAWN BY WDL	

SECTION VIEWPORTS



INSTRUMENTATION KEY

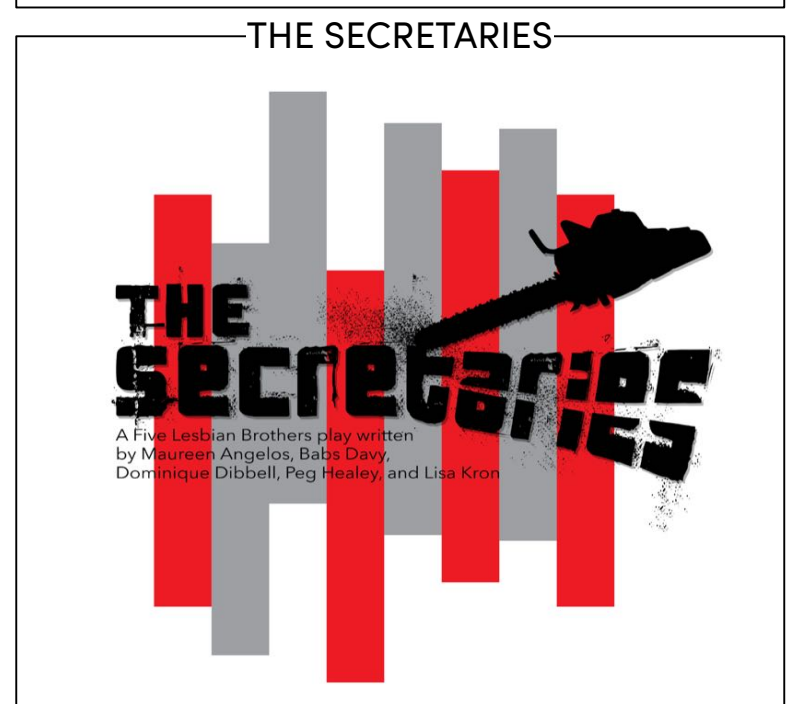
	ETC ColorSource Spot 19deg	10
	ETC ColorSource Spot 26deg	21
	ETC ColorSource Spot 26deg Deep Blue	18
	ETC ColorSource Spot 36deg	17
	ETC ColorSource Spot 36deg Deep Blue	2
	ETC ColorSource Spot 50deg Deep Blue	6
	ETC ColorSource Spot 90deg	4
	ETC ColorSource PAR Deep Blue Medium Round	34
	ETC ColorSource CYC	11
	Blizzard Lighting Tour QT IP Skywire	8
	Desk Practical	8
	Ceiling Practical	4
	Martin MAC Encore Performance CLD	2
	High End Systems SoloSpot Pro 2000	2



NOTES

- Have R19 On Hand For All Instruments At Hang
- Have Barn Doors for PARs Available At Focus
- Pencil Notes Take Priority Over Printed Notes

Will Loconto
LIGHTING DESIGNER
(512) 239 9311 • wloconto@ttu.edu



PRODUCTION TEAM
TEXAS TECH UNIVERSITY

Director	Sarah Mayhew
Scenic Designer	Matthew Chilcoat
Costume Designer	Olivia Carlin
Sound Designer	Oliver Loll
Stage Manager	Kaylie Jones
Production Manager	Josh Whitt
Production Electrician	Kyle Jensen

This drawing represents visual concepts and construction suggestions only. The designer is not qualified to determine the structural appropriateness of this design and will not assume responsibility for improper engineering, construction, or usage. All materials, finishes, and construction must comply with the most stringent fire and safety codes as applicable.

SUBMITTALS

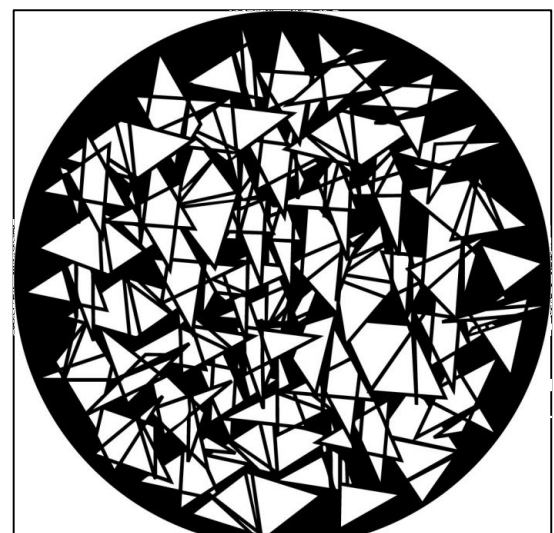
11/30/22	Greenlight Package
1/10/23	Initial Hang
1/17/23	Updated Hang

The CH Foundation The Legacy of Christine DeVitt Black Box Theatre

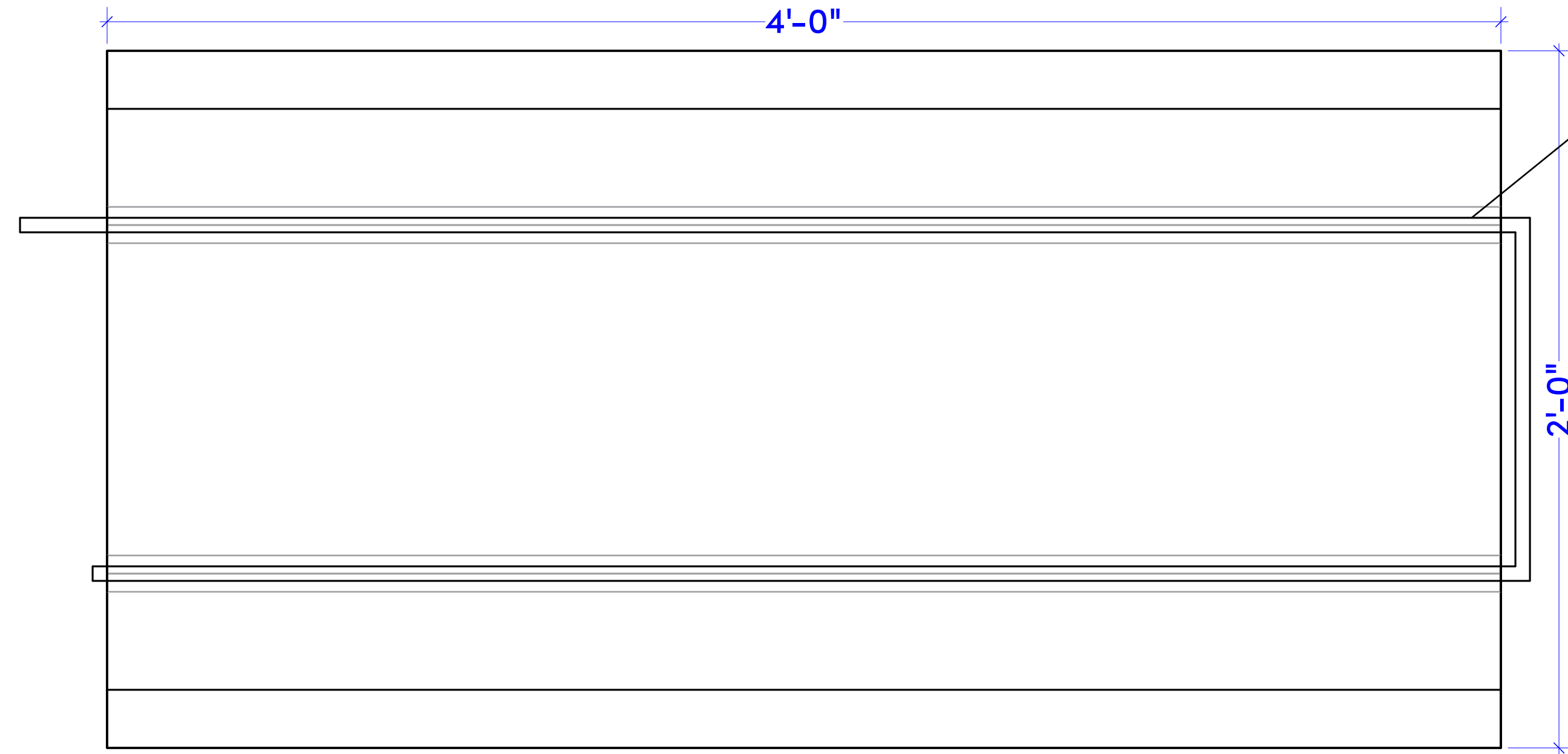
1/4" = 1' - 0" SCALE EXCEPT WHERE NOTED	PLATE
1/17/2023 DATE	LD 06
1/17/2023 REVISION	of 8
DRAWN BY WDL	

FOCUS CHARTS

GOBO SELECTION ORDER

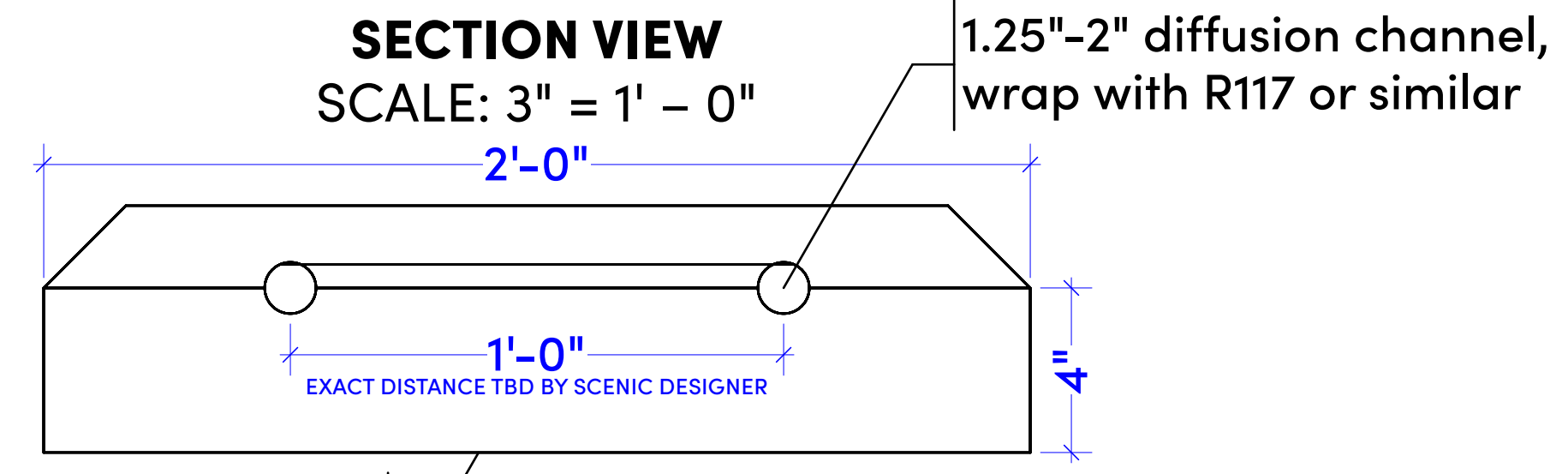


OVERHEAD VIEW
SCALE: 3" = 1' - 0"



LED Tape run to be one continuous length per fixture, or two runs joined by soldered wire

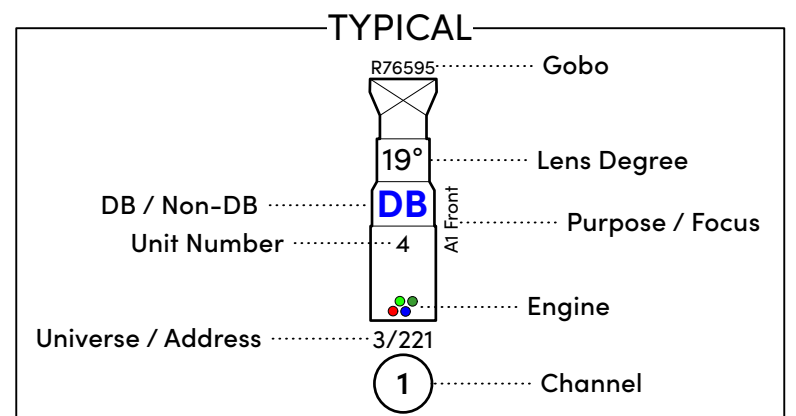
SECTION VIEW
SCALE: 3" = 1' - 0"



Secondary diffusion panel, implementation TBD by scenic designer

INSTRUMENTATION KEY

	ETC ColorSource Spot 19deg	10
	ETC ColorSource Spot 26deg	21
	ETC ColorSource Spot 26deg Deep Blue	18
	ETC ColorSource Spot 36deg	17
	ETC ColorSource Spot 36deg Deep Blue	2
	ETC ColorSource Spot 50deg Deep Blue	6
	ETC ColorSource Spot 90deg	4
	ETC ColorSource PAR Deep Blue Medium Round	34
	ETC ColorSource CYC	11
	Blizzard Lighting Tour QT IP Skywire	8
	Desk Practical	8
	Ceiling Practical	4
	Martin MAC Encore Performance CLD	2
	High End Systems SoloSpot Pro 2000	2



NOTES

- Have R119 On Hand For All Instruments At Hang
- Have Barn Doors for PARs Available At Focus
- Pencil Notes Take Priority Over Printed Notes

Will Loconto
LIGHTING DESIGNER
(512) 239 9311 • wloconto@ttu.edu

THE SECRETARIES

A Foundation Brothers play written by Matthew Angelos, Betsy Day, Dawn Marie O'Neil, Peg Henny, and Lisa Knox

PRODUCTION TEAM TEXAS TECH UNIVERSITY

Director	Sarah Mayhew
Scenic Designer	Matthew Chilcoat
Costume Designer	Olivia Carlin
Sound Designer	Oliver Loll
Stage Manager	Kaylie Jones
Production Manager	Josh Whitt
Production Electrician	Kyle Jensen

This drawing represents visual concepts and construction suggestions only. The designer is not qualified to determine the structural appropriateness of this design and will not assume responsibility for improper engineering, construction, or usage. All materials, finishes, and construction must comply with the most stringent fire and safety codes as applicable.

SUBMITTALS

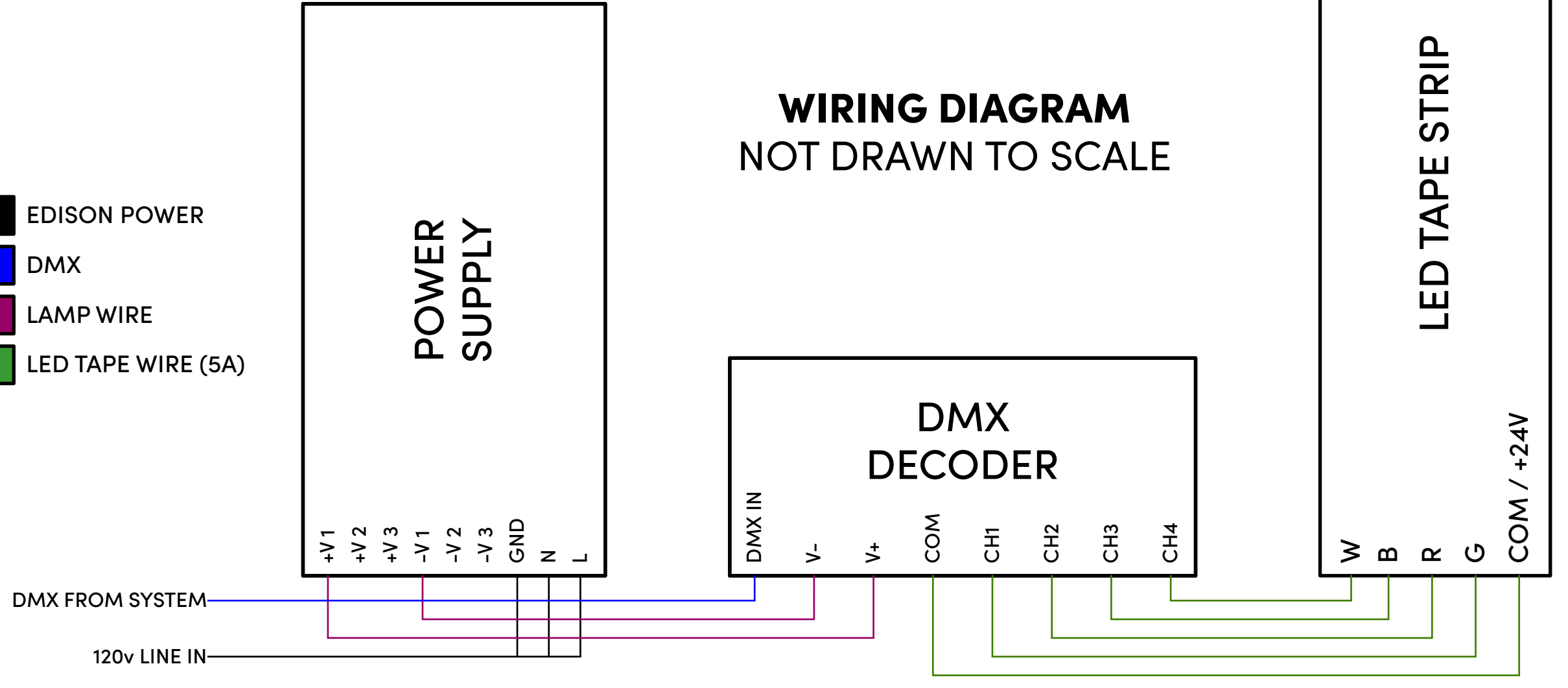
11/30/22	Greenlight Package
1/10/23	Initial Hang
1/17/23	Updated Hang

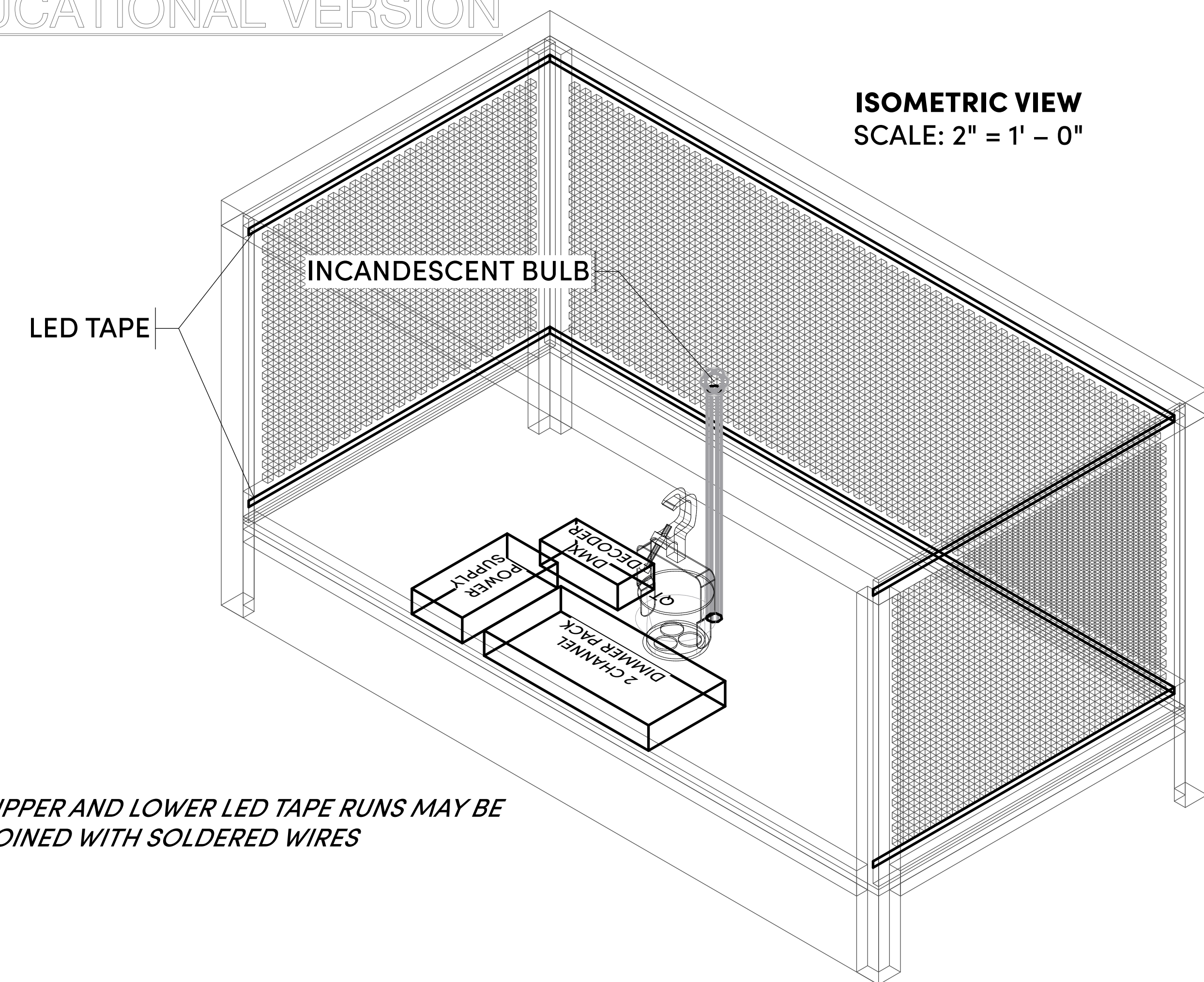
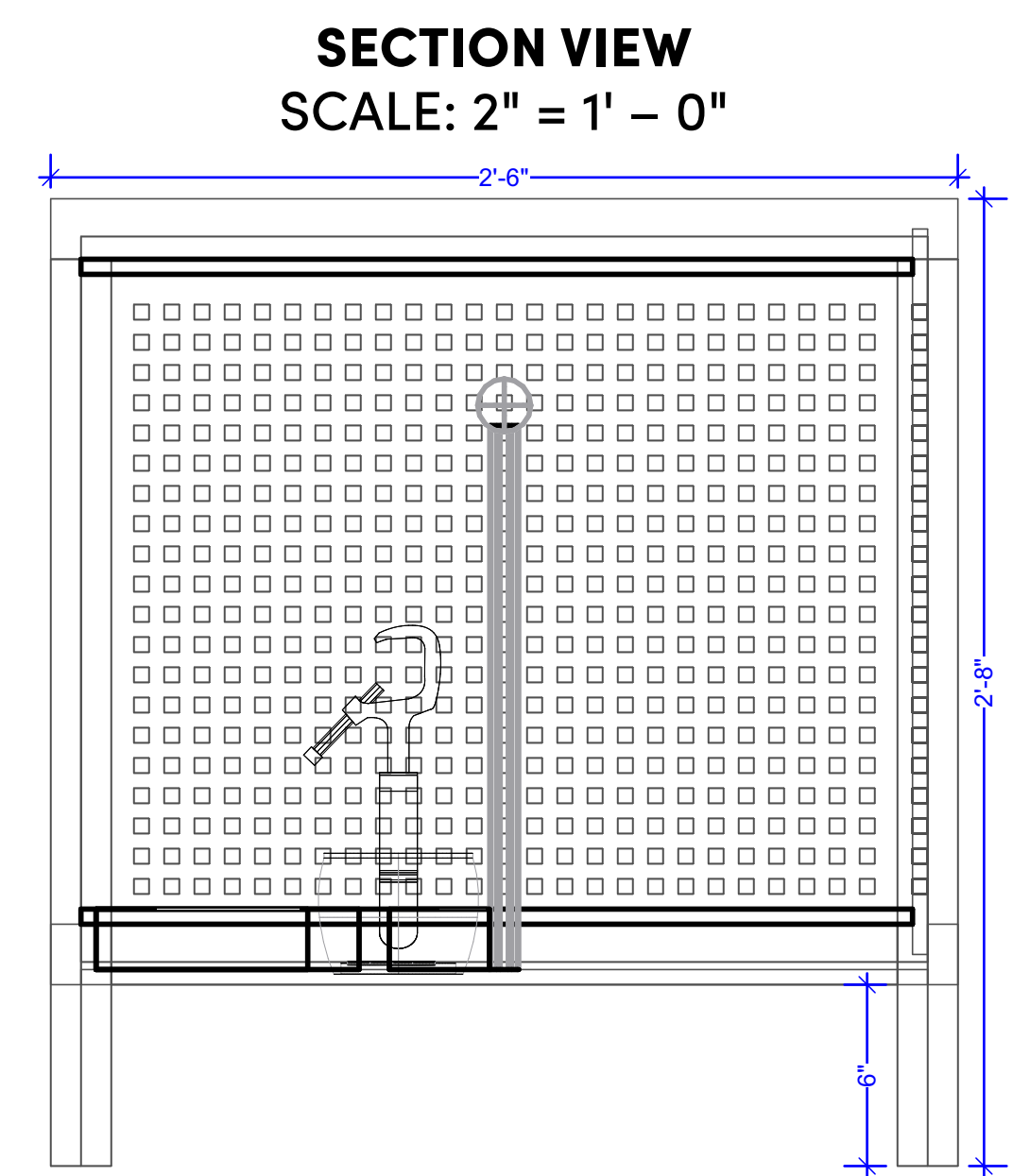
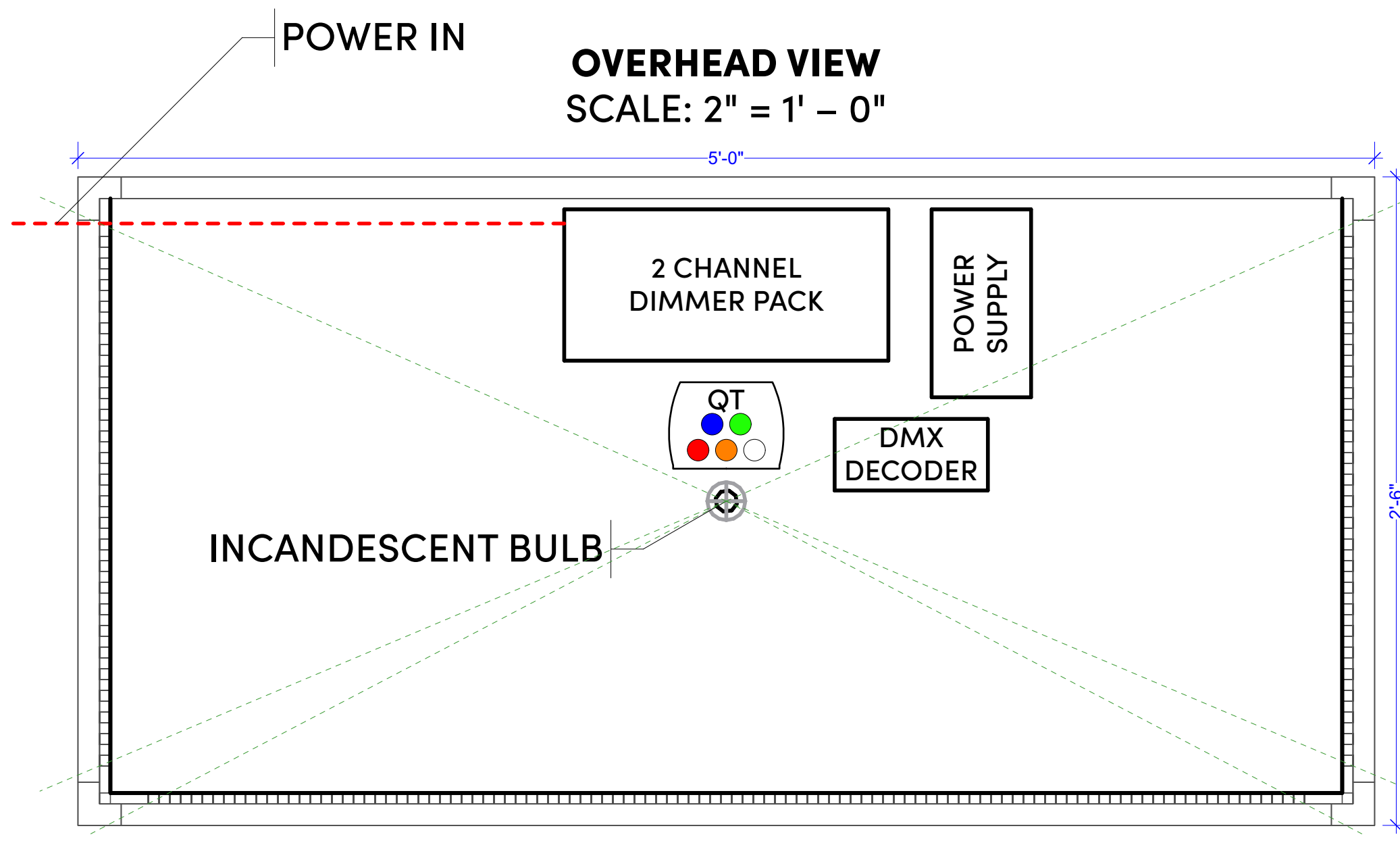
The CH Foundation The Legacy of Christine DeVitt Black Box Theatre

1/4" = 1' - 0" SCALE EXCEPT WHERE NOTED	PLATE
1/17/2023 DATE	LD 07 of 8
1/17/2023 REVISION	
DRAWN BY WDL	

Item	Distance	Quantity	Total
LED Tape	10'	4	40'
Diffusion Tube	4'	8	32'
Power Supply	-	4	4
DMX Decoder	-	4	4

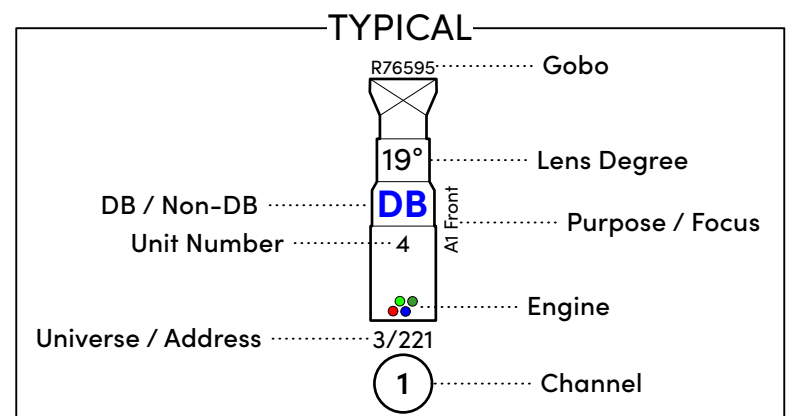
EDISON POWER
 DMX
 LAMP WIRE
 LED TAPE WIRE (5A)





INSTRUMENTATION KEY

	ETC ColorSource Spot 19deg	10
	ETC ColorSource Spot 26deg	21
	ETC ColorSource Spot 26deg Deep Blue	18
	ETC ColorSource Spot 36deg	17
	ETC ColorSource Spot 36deg Deep Blue	2
	ETC ColorSource Spot 50deg Deep Blue	6
	ETC ColorSource Spot 90deg	4
	ETC ColorSource PAR Deep Blue Medium Round	34
	ETC ColorSource CYC	11
	Blizzard Lighting Tour QT IP Skywire	8
	Desk Practical	8
	Ceiling Practical	4
	Martin MAC Encore Performance CLD	2
	High End Systems SoloSpot Pro 2000	2



NOTES

- Have R119 On Hand For All Instruments At Hang
- Have Barn Doors for PARs Available At Focus
- Pencil Notes Take Priority Over Printed Notes

Will Loconto
LIGHTING DESIGNER
(512) 239 9311 • wloconto@ttu.edu

THE SECRETARIES

A Franchising Brothers play written by Marlene Angelos, Bala Dey, Doreen O'Sullivan, Peg Henny, and Lisa Kinn

PRODUCTION TEAM TEXAS TECH UNIVERSITY

Director	Sarah Mayhew
Scenic Designer	Matthew Chilcoat
Costume Designer	Olivia Carlin
Sound Designer	Oliver Loll
Stage Manager	Kaylie Jones
Production Manager	Josh Whitt
Production Electrician	Kyle Jensen

This drawing represents visual concepts and construction suggestions only. The designer is not qualified to determine the structural appropriateness of this design and will not assume responsibility for improper engineering, construction, or usage. All materials, finishes, and construction must comply with the most stringent fire and safety codes as applicable.

SUBMITTALS

11/30/22	Greenlight Package
1/10/23	Initial Hang
1/17/23	Updated Hang

The CH Foundation The Legacy of Christine DeVitt Black Box Theatre

1:32	PLATE
SCALE EXCEPT WHERE NOTED	LD 08 of 8
1/17/2023	
DATE	
1/17/2023	REVISION
DRAWN BY WDL	

DESK PRACTICALS

Item	Distance	Quantity	Total
LED Tape	10'	8	80'
Blizzard QT	-	4	4
Incandescent Bulb	-	4	4
Power Supply	-	4	4
DMX Decoder	-	4	4
Dimmer Pack	-	4	4

UPPER AND LOWER LED TAPE RUNS MAY BE JOINED WITH SOLDERED WIRES

WIRING DIAGRAM
NOT DRAWN TO SCALE

